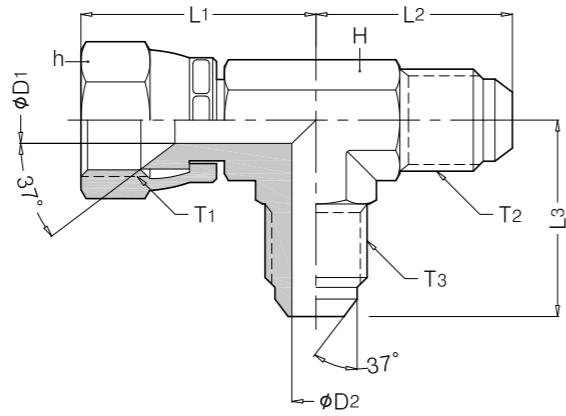
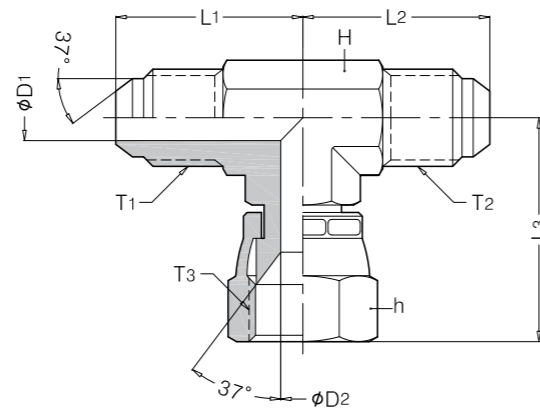


RUN TEE, SWIVEL NUT TYPE  
**RTS**



Part No.	T1 (UNF)	T2,T3 (UNF)	D1	D2	h	H	L1 (Approx)	L2,L3
RTS 07U	7/16	7/16	4.5	4.5	16	14	27	26
RTS 08U	1/2	1/2	5.5	5.5	16	14	28	26
RTS 09U	9/16	9/16	7.5	7.5	19	14	28	27
RTS 12U	3/4	3/4	9.9	9.9	22	19	35.5	32
RTS 14U	7/8	7/8	12.3	12.3	27	22	42	36
RTS 17U	1 1/16	1 1/16	15.5	15.5	32	27	45.5	42
RTS 21U	1 5/16	1 5/16	21	21	38	36	51.5	46
RTS 26U	1 5/8	1 5/8	27	27	50	41	59	52
RTS 30U	1 7/8	1 7/8	33	33	55	50	67	59
RTS 40U	2 1/2	2 1/2	43	43	75	65	86	76

BRANCH TEE, SWIVEL BSPP TYPE  
**BTS**



Part No.	T1,T2 (UNF)	T3 (UNF)	D1	D2	h	H	L1,L2	L3 (Approx)
BTS 07U	7/16	7/16	4.5	4.5	16	14	26	27
BTS 08U	1/2	1/2	5.5	5.5	16	14	26	28
BTS 09U	9/16	9/16	7.5	7.5	19	14	27	31
BTS 12U	3/4	3/4	9.9	9.9	22	19	32	35.5
BTS 14U	7/8	7/8	12.3	12.3	27	22	36	42
BTS 17U	1 1/16	1 1/16	15.5	15.5	32	27	42	45.5
BTS 21U	1 5/16	1 5/16	21	21	38	36	46	51.5
BTS 26U	1 5/8	1 5/8	27.5	27.5	50	41	52	59
BTS 30U	1 7/8	1 7/8	33	33	55	50	59	67
BTS 40U	2 1/2	2 1/2	43	43	75	65	76	86

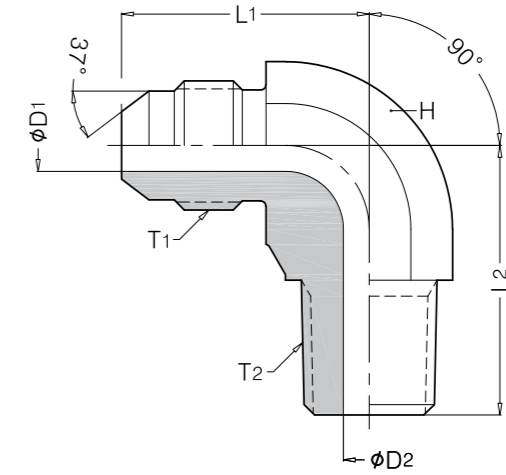


**BENDING ELBOWS**



BENDING 90° ELBOW 'A' TYPE

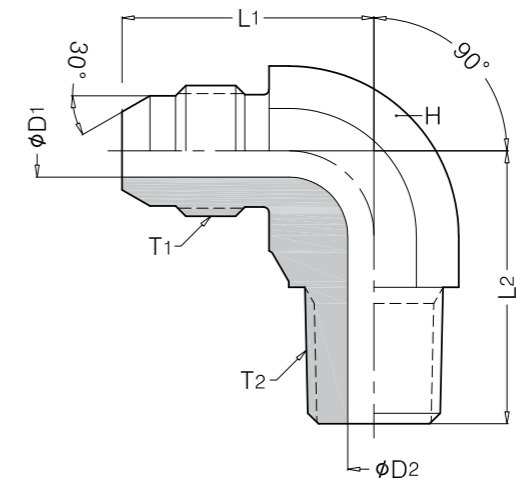
**R-ELA**



Part No.	T <sub>1</sub> (UNF)	T <sub>2</sub> (BSPT)	D <sub>1</sub>	D <sub>2</sub>	H	L <sub>1</sub>	L <sub>2</sub>
R-ELA 04R-08U	1/2	1/4	5	5	14	24	26
R-ELA 06R-12U	3/4	3/8	8	8	19	32	30
R-ELA 08R-14U	7/8	1/2	11	11	22	37	36
R-ELA 12R-17U	1 1/16	3/4	15.5	15.5	27	42	43
R-ELA 16R-21U	1 5/16	1	20	20	35	46	50

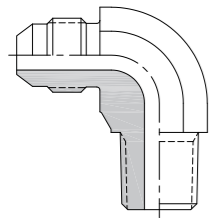
BENDING 90° ELBOW 'B' TYPE

**R-ELB**



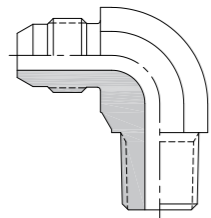
Part No.	T <sub>1</sub> (BSPP)	T <sub>2</sub> (BSPT)	D <sub>1</sub>	D <sub>2</sub>	H	L <sub>1</sub>	L <sub>2</sub>
R-ELB 04R-04G	1/4	1/4	5	5	14	25	26
R-ELB 06R-06G	3/8	3/8	8	8	19	30	30
R-ELB 08R-08G	1/2	1/2	11	11	22	33	36
R-ELB 12R-12G	3/4	3/4	15.5	15.5	27	38	43
R-ELB 16R-16G	1	1	20	20	35	45	50

**R-ELA**



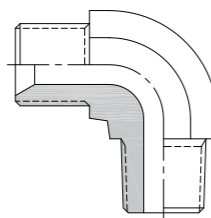
P.125

**R-ELB**



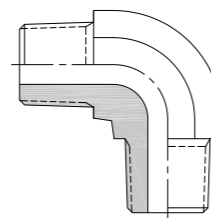
P.125

**R-ELC**



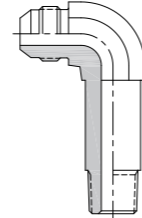
P.126

**R-ELD**



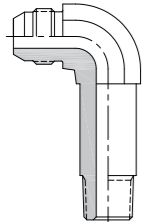
P.126

**R-ELLA**



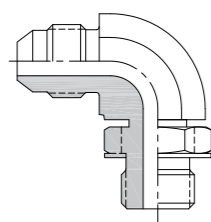
P.127

**R-ELLB**



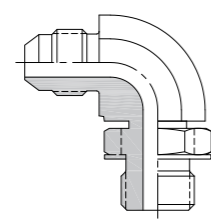
P.127

**R-ELOA**



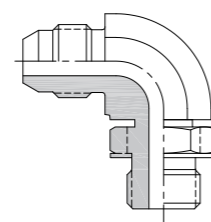
P.128

**R-ELOAB**



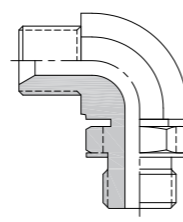
P.128

**R-ELOB**



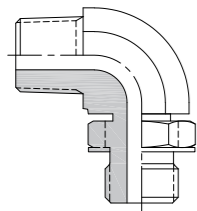
P.129

**R-ELOC**



P.129

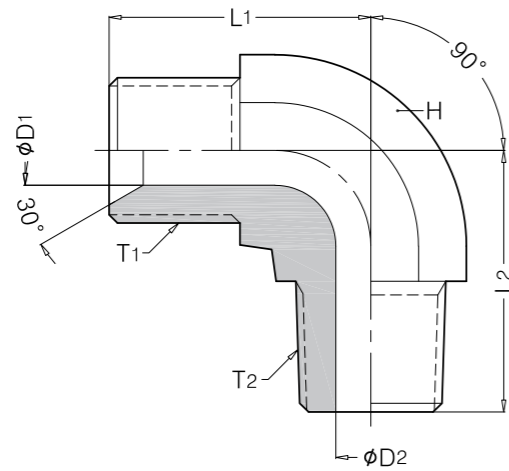
**R-ELOD**



P.130

BENDING 90° ELBOW 'C' TYPE

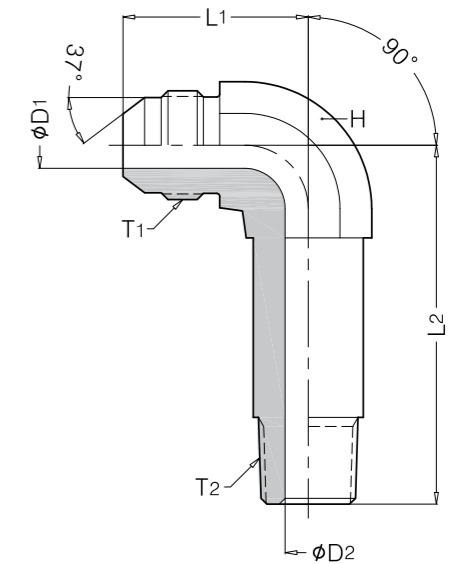
**R-ELC**



Part No.	T <sub>1</sub> (BSPP)	T <sub>2</sub> (BSPT)	D <sub>1</sub>	D <sub>2</sub>	H	L <sub>1</sub>	L <sub>2</sub>
R-ELC 04R-04G	1/4	1/4	5	5	14	26	26
R-ELC 06R-06G	3/8	3/8	8	8	19	30	30
R-ELC 08R-08G	1/2	1/2	11	11	22	35	36
R-ELC 12R-12G	3/4	3/4	15.5	15.5	27	42	43
R-ELC 16R-16G	1	1	20	20	35	47	50

BENDING 90° LONG ELBOW 'A' TYPE

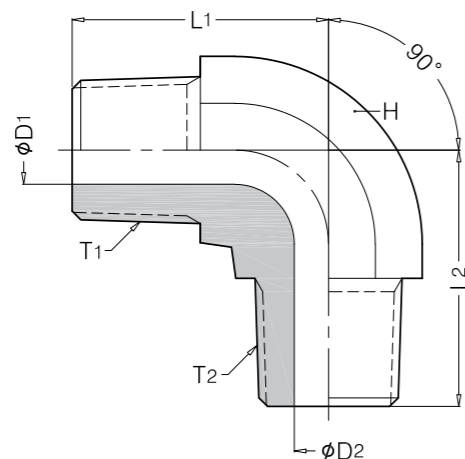
**R-ELLA**



Part No.	T <sub>1</sub> (UNF)	T <sub>2</sub> (BSPT)	D <sub>1</sub>	D <sub>2</sub>	H	L <sub>1</sub>	L <sub>2</sub>
R-ELLA 04R-08U	1/2	1/4	5	5	14	24	50
R-ELLA 06R-12U	3/4	3/8	8	8	19	32	62
R-ELLA 08R-14U	7/8	1/2	11	11	22	37	74
R-ELLA 12R-17U	1 1/16	3/4	15.5	15.5	27	42	88
R-ELLA 16R-21U	1 5/16	1	20	20	35	46	107

BENDING 90° ELBOW 'D' TYPE

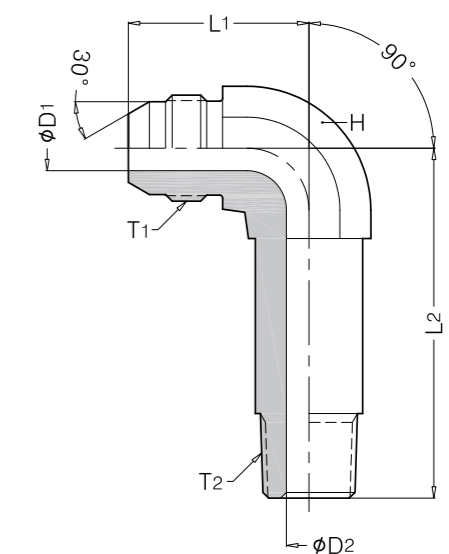
**R-ELD**



Part No.	T <sub>1</sub> (BSPT)	T <sub>2</sub> (BSPT)	D <sub>1</sub>	D <sub>2</sub>	H	L <sub>1</sub>	L <sub>2</sub>
R-ELD 04R-04R	1/4	1/4	5	5	14	26	26
R-ELD 06R-06R	3/8	3/8	8	8	19	30	30
R-ELD 08R-08R	1/2	1/2	11	11	22	36	36
R-ELD 12R-12R	3/4	3/4	15.5	15.5	27	43	43
R-ELD 16R-16R	1	1	20	20	35	50	50

BENDING 90° LONG ELBOW 'B' TYPE

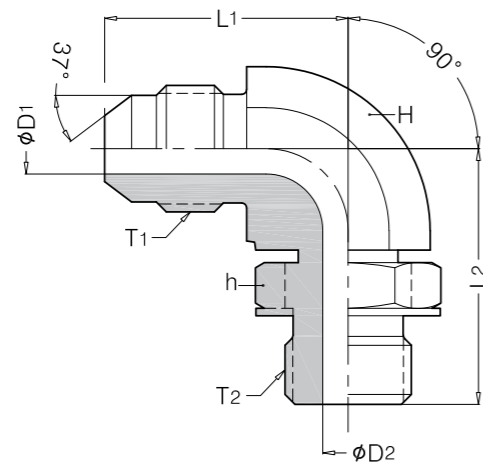
**R-ELLB**



Part No.	T <sub>1</sub> (BSPP)	T <sub>2</sub> (BSPT)	D <sub>1</sub>	D <sub>2</sub>	H	L <sub>1</sub>	L <sub>2</sub>
R-ELLB 04R-04G	1/4	1/4	5	5	14	25	50
R-ELLB 06R-06G	3/8	3/8	8	8	19	30	62
R-ELLB 08R-08G	1/2	1/2	11	11	22	33	74
R-ELLB 12R-12G	3/4	3/4	15.5	15.5	27	38	88
R-ELLB 16R-16G	1	1	20	20	35	45	107

BENDING 90° O-RING ELBOW 'A' TYPE

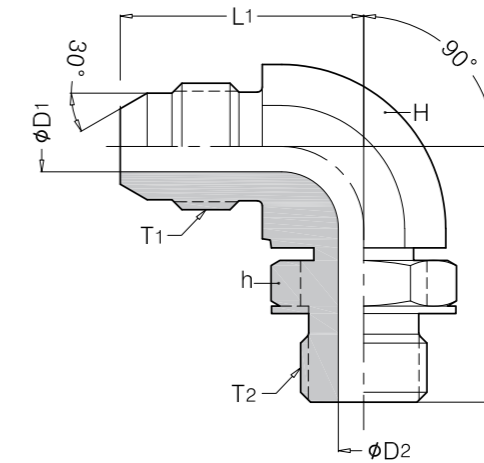
**R-ELOA**



Part No.	T <sub>1</sub> (UNF)	T <sub>2</sub> (UNF)	D <sub>1</sub>	D <sub>2</sub>	H	L <sub>1</sub>	L <sub>2</sub>
R-ELOA 08U-08U	1/2	1/2	5	5	14	24	28.5
R-ELOA 12U-12U	3/4	3/4	8	8	19	32	37
R-ELOA 14U-14U	7/8	7/8	11	11	22	37	43
R-ELOA 17U-17U	1 1/16	1 1/16	15.5	15.5	27	42	49.5

BENDING 90° O-RING ELBOW 'B' TYPE

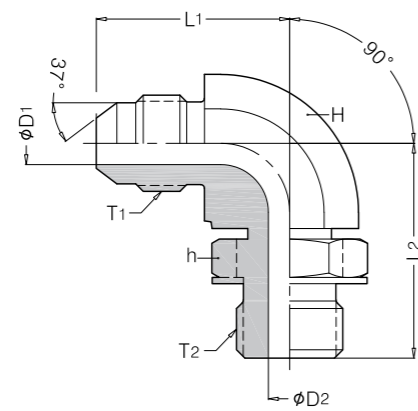
**R-ELOB**



Part No.	T <sub>1</sub> (BSPP)	T <sub>2</sub> (BSPP)	D <sub>1</sub>	D <sub>2</sub>	H	L <sub>1</sub>	L <sub>2</sub>
R-ELOB 04G-04G	1/4	1/4	5	5	14	25	32
R-ELOB 06G-06G	3/8	3/8	8	8	19	30	37
R-ELOB 08G-08G	1/2	1/2	11	11	22	33	43
R-ELOB 12G-12G	3/4	3/4	15.5	15.5	27	38	49.5
R-ELOB 16G-16G	1	1	20	20	35	45	52

BENDING 90° O-RING ELBOW 'A-B' TYPE

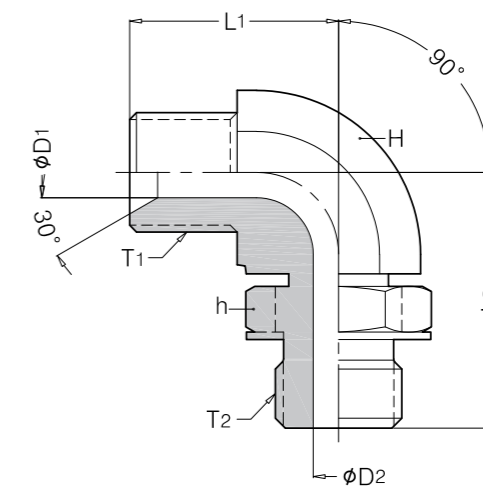
**R-ELOAB**



Part No.	T <sub>1</sub> (UNF)	T <sub>2</sub> (BSPP)	D <sub>1</sub>	D <sub>2</sub>	H	L <sub>1</sub>	L <sub>2</sub>
R-ELOAB 07U-02G	7/16	1/8	4	4	14	22.5	26.5
R-ELOAB 08U-04G	1/2	1/4	5	5	14	24	32
R-ELOAB 09U-06G	9/16	3/8	7.5	7.5	19	27	37
R-ELOAB 12U-06G	3/4	3/8	8	8	19	32	37
R-ELOAB 14U-08G	7/8	1/2	11	11	22	37	43
R-ELOAB 17U-12G	1 1/16	3/4	15.5	15.5	27	42	49.5
R-ELOAB 21U-16G	1 5/16	1	20	20	35	46	52

BENDING 90° O-RING ELBOW 'C' TYPE

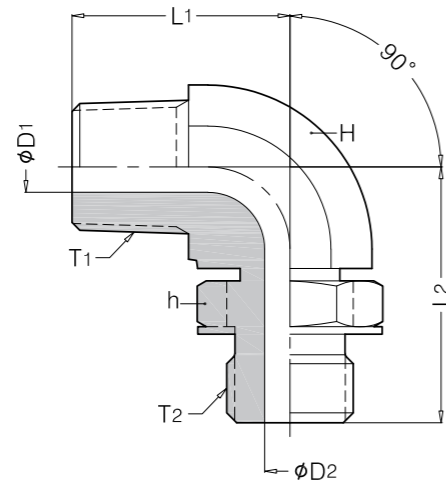
**R-ELOC**



Part No.	T <sub>1</sub> (BSPP)	T <sub>2</sub> (BSPP)	D <sub>1</sub>	D <sub>2</sub>	H	L <sub>1</sub>	L <sub>2</sub>
R-ELOC 04G-04G	1/4	1/4	5	5	14	26	32
R-ELOC 06G-06G	3/8	3/8	8	8	19	30	37
R-ELOC 08G-08G	1/2	1/2	11	11	22	35	43
R-ELOC 12G-12G	3/4	3/4	15.5	15.5	27	42	49.5
R-ELOC 16G-16G	1	1	20	20	35	47	52

BENDING 90° O-RING ELBOW 'D' TYPE

**R-ELOD**



Part No.	T <sub>1</sub> (BSPT)	T <sub>2</sub> (BSPP)	D <sub>1</sub>	D <sub>2</sub>	H	L <sub>1</sub>	L <sub>2</sub>
R-ELOD 04R-04G	1/4	1/4	5	5	14	26	32
R-ELOD 06R-06G	3/8	3/8	8	8	19	30	37
R-ELOD 08R-08G	1/2	1/2	11	11	22	36	43
R-ELOD 12R-12G	3/4	3/4	15.5	15.5	27	43	49.5
R-ELOD 16R-16G	1	1	20	20	35	50	52

SOCKET WELDING & SCREWED TYPE POPE FITTINGS



Sekwang pipe fittings are usually made with carbonsteel forgings or bar stocks. They are produced to all internationally recognized standards.

Working Pressure & Screw Type 2000 PSI  
 Welding Type SCH80 3000 PSI  
 SCH 160 6000 PSI