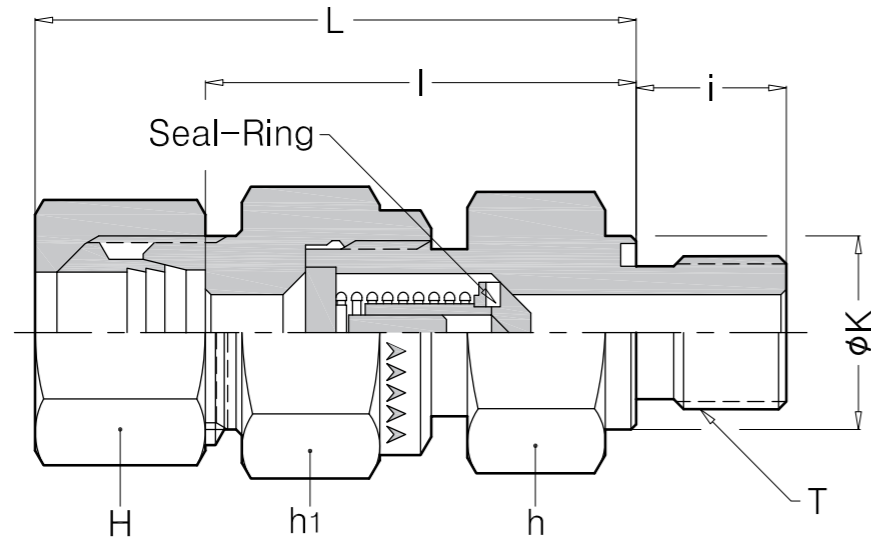


SKH NON RETURN VALVE
SHCV MED - L/S



for Metric Paralled

Series	Part No.	Tube O.D.	H	h	h ₁	K	L	l	i	T
L light PN 250	06L-M10ED	6	14	17	17	14	41	26.5	8	M10X1.0
	08L-M12ED	8	17	19	19	17	43	28.5	12	M12X1.5
	10L-M14ED	10	19	24	22	19	53	38.5	12	M14X1.5
	12L-M16ED	12	22	30	27	22	55	40.5	12	M16X1.5
	15L-M18ED	15	27	32	27	24	57.5	42.5	12	M18X1.5
PN 160	18L-M22ED	18	32	36	36	27	64	48	14	M22X1.5
	22L-M26ED	22	36	46	41	32	72	56	16	M26X1.5
PN 100	28L-M33ED	28	41	55	50	40	80.5	64	18	M33X2.0
	35L-M42ED	35	50	60	60	50	91.5	70	20	M42X2.0
	42L-M48ED	42	60	70	65	55	93	70.5	22	M48X2.0
S heavy PN 400	06S-M12ED	6	17	19	19	17	46	31.5	12	M12X1.5
	08S-M14ED	8	19	19	19	19	46	31.5	12	M14X1.5
	10S-M16ED	10	22	24	22	22	54	38	12	M16X1.5
	12S-M18ED	12	24	27	24	24	57	41	12	M18X1.5
	14S-M20ED	14	27	32	27	26	61	43.5	14	M20X1.5
	16S-M22ED	16	30	36	32	27	64	46	14	M22X1.5
PN 250	20S-M27ED	20	36	46	41	32	71.5	50	16	M27X2.0
	25S-M33ED	25	46	50	46	40	78.5	54.5	18	M33X2.0
	30S-M42ED	30	50	60	60	50	90.5	64	20	M42X2.0
	38S-M48ED	38	60	70	50	55	102	71.5	2	M48X2.0

Non Return Valve direction of fluid flow and pressure check



FLANGE



We promise to make every effort to produce better quality fittings and create new technologies.

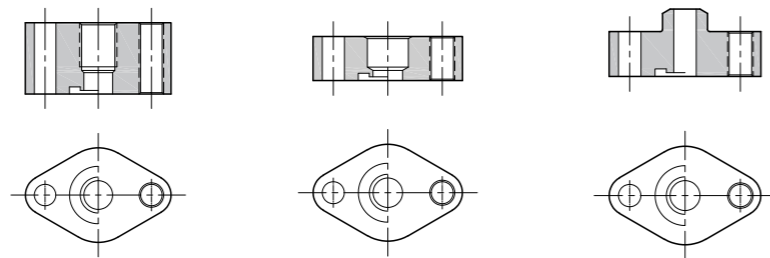
SFSL SQUARE SOCKET WELD FLANGE **SOCKET WELD FLANGE-90°C**

P.262



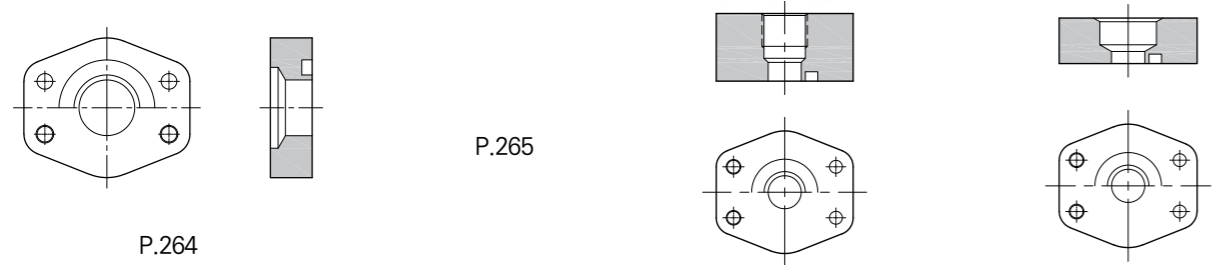
STBF **BSPT TYPE** **SOCKET WELD TYPE** **WELD ON TYPE**

P.263



SSWF **STWF** **BSPT TYPE** **SOCKET WELD TYPE**

P.264



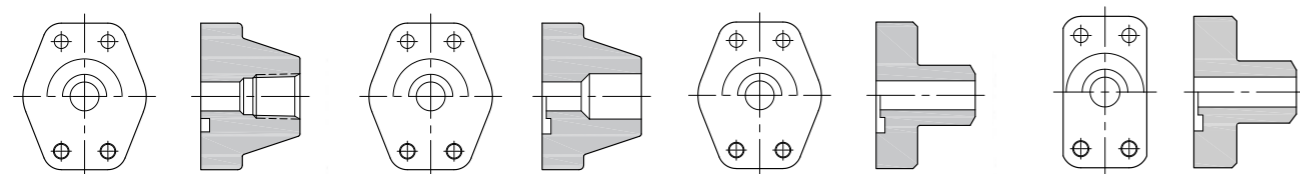
STBT **SWBT** **SWOF** **SRWF**

P.266

P.267

P.268

P.269



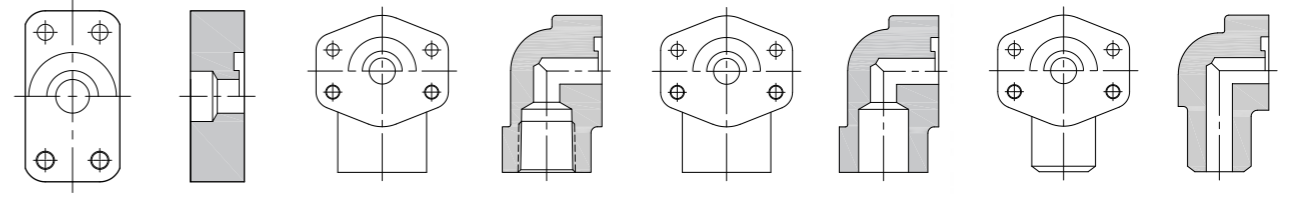
SRSW **SWFL** **SWOFL**

P.270

P.271

P.272

P.273



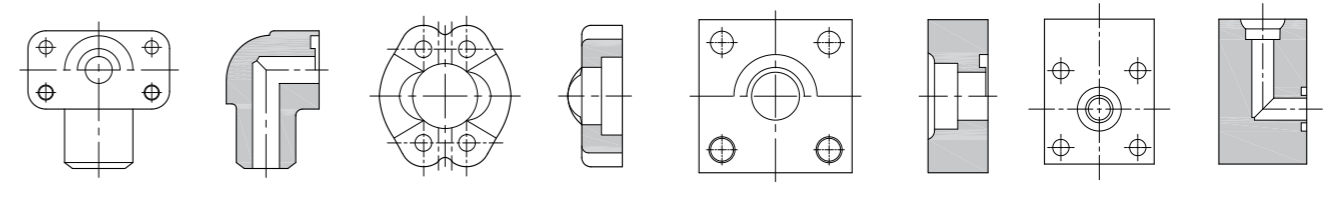
SWRFL **SSF** **SFSW** **STFL**

P.274

P.275

P.276

P.277



SFTL **SQUARE THREAD FLANGE-BSPT** **THREAD FLANGE-90° BSPT**

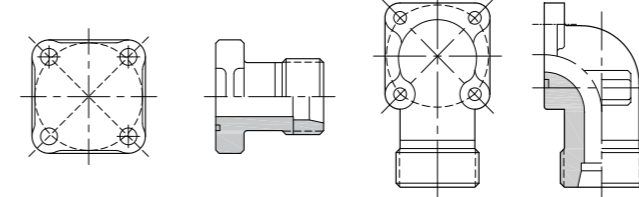
P.278



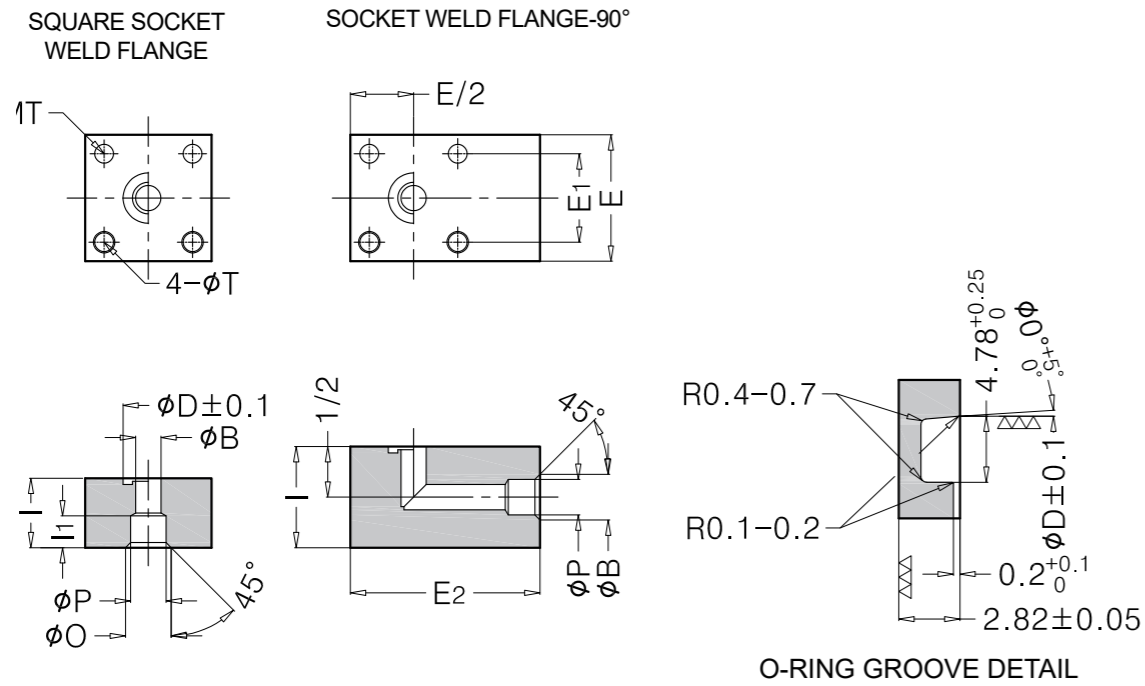
SBFG **SBFW**

P.279

P.280



SQUARE & ELBOW FLANGE-SOCKET TYPE SFSL



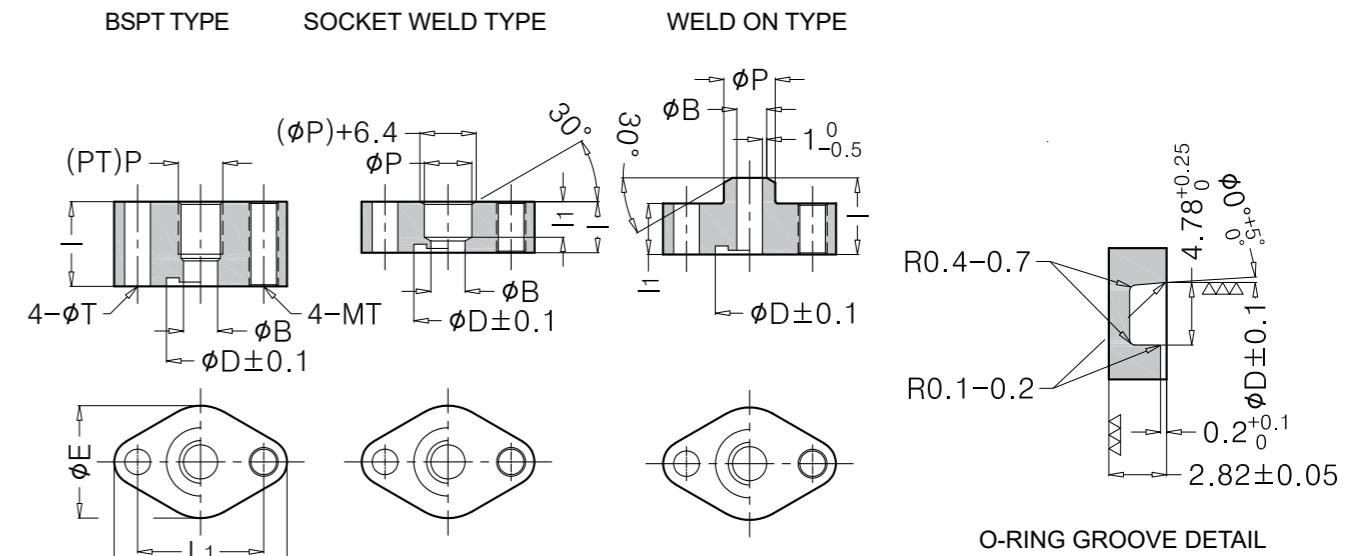
SQUARE SOCKET WELD FLANGE

Part No.	NORMAL FLANGE	SIZE PIPE	P	B	D	O	I	I ₁	E	E ₁	T	O-RING AS568
SFSL-15S	15A	21.7	22.2	13	26.75	30.2	18	13.5	58	36.6	M10	- 211
SFSL-20S	20A	27.7	27.7	19	31.52	35.7	18	13.5	58	36.6	φ 11	- 214
SFSL-25S	25A	34.5	34.5	25	39.45	42.5	25	16.0	76	50.8	M12	- 219
SFSL-32S	32A	42.7	43.2	32	50.62	51.2	25	16.0	76	50.8	φ 13.5	- 224
SFSL-40S	40A	48.6	49.2	38	56.97	61.2	31	22.0	102	69.8	M16	- 226
SFSL-50S	50A	60.5	61.1	51	66.50	73.1	31	22.0	102	69.8	φ 17.5	- 229
SFSL-65S	65A	76.3	77.1	63	82.37	89.1	38	27.0	140	95.2	M22	- 234
SFSL-80S	80A	89.1	90.0	73	95.07	102	38	27.0	140	95.2	φ 24	- 238

SOCKET WELD FLANGE-90°

Part No.	NORMAL FLANGE	SIZE PIPE	P	B	D	O	I	I ₁	E	E ₁	E ₂	T	O-RING AS568
SFSL-15SS	15A	21.7	22.2	13	26.75	30.2	38	13.5	58	36.6	80	M10	- 211
SFSL-20SS	20A	27.7	27.7	19	31.52	35.7	42	13.5	58	36.6	80	φ 11	- 214
SFSL-25SS	25A	34.5	34.5	25	39.45	42.5	51	16.0	76	50.8	105	M12	- 219
SFSL-32SS	32A	42.7	43.2	32	50.62	51.2	59	16.0	76	50.8	105	φ 13.5	- 224
SFSL-40SS	40A	48.6	49.2	38	56.97	61.2	76	22.0	102	69.8	130	M16	- 226
SFSL-50SS	50A	60.5	61.1	51	66.50	73.1	76	22.0	102	69.8	130	φ 17.5	- 229
SFSL-65SS	65A	76.3	77.1	63	82.37	89.1	102	27.0	140	95.2	181	M22	- 234
SFSL-80SS	80A	89.1	90.0	73	95.07	102	124	27.0	140	95.2	181	φ 24	- 238

TWO BOLT FLANGE STBF



BSPT TYPE

Part No.	IN PIPE	P	B	D	I	E	L	L ₁	T	O-RING AS568
STBF-15T	φ 21.7	1/2	14.3	31.52	26	46	67	47.6	M10	- 214
STBF-20T	φ 27.2	3/4	19.4	37.87	28	50	71.5	52.4	φ 11	- 218
STBF-25T	φ 34.0	1	25	37.87	32	50	71.5	52.4	φ 11	- 218
STBF-32T	φ 42.7	1 1/4	32.9	50.62	36	70	95	69.9	M12	- 224
STBF-40T	φ 48.6	1 1/2	38.4	50.62	42	70	95	69.9	φ 13.5	- 224

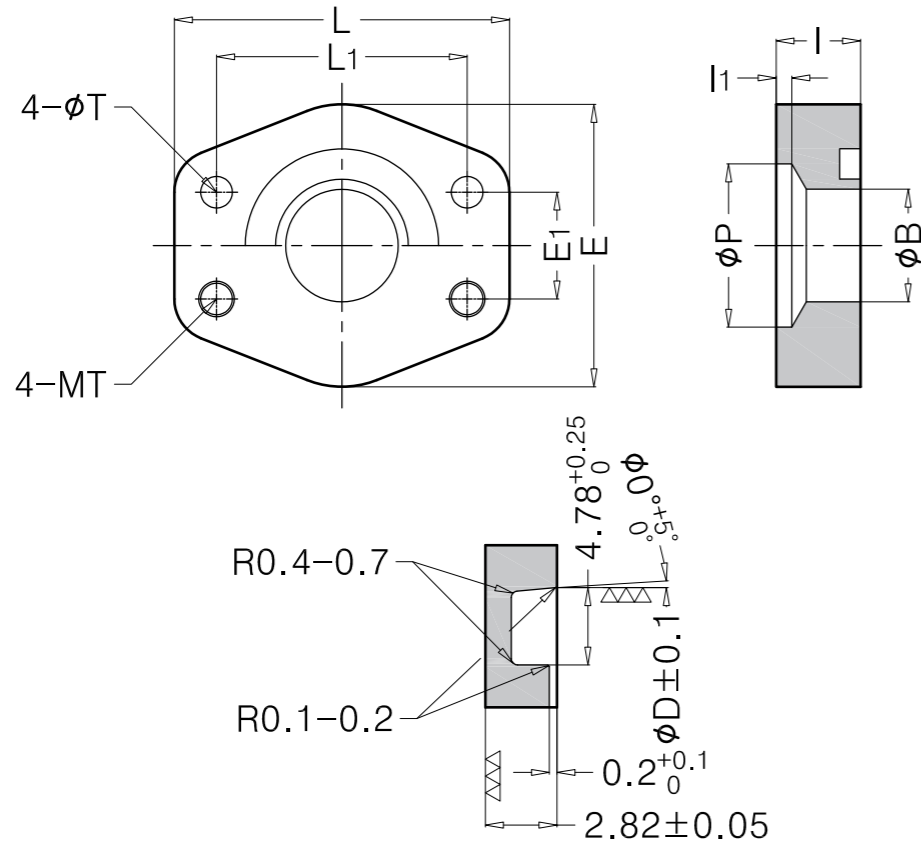
SOCKET WELD TYPE

Part No.	IN PIPE	P	B	D	I	I ₁	E	L	L ₁	T	O-RING AS568
STBF-15S	φ 21.7	22.2	14.3	31.52	19	14	46	67	47.6	M10	- 214
STBF-20S	φ 27.2	27.7	19.4	37.87	23	16	50	71.5	52.4	φ 11	- 218
STBF-25S	φ 34.0	34.5	25	37.87	28.5	17.5	50	71.5	52.4	φ 11	- 218
STBF-32S	φ 42.7	43.2	32.9	50.62	32	19	70	95	69.9	M12	- 224
STBF-40S	φ 48.6	49.1	38.4	50.62	36	22	70	95	69.9	φ 13.5	- 224

WELD ON TYPE

Part No.	IN PIPE	P	B	D	I	I ₁	E	L	L ₁	T	O-RING AS568
STBF-15W	φ 21.7	1/2	14.3	31.52	38	18	46	67	47.6	M10	- 214
STBF-20W	φ 27.2	3/4	19.4	37.87	38	18	50	71.5	52.4	φ 11	- 218
STBF-25W	φ 34.0	1	25	37.87	38	18	50	71.5	52.4	φ 11	- 218
STBF-32W	φ 42.7	1 1/4	32.9	50.62	42	22	70	95	69.9	M12	- 224
STBF-40W	φ 48.6	1 1/2	38.4	50.62	45	25	70	95	69.9	φ 13.5	- 224

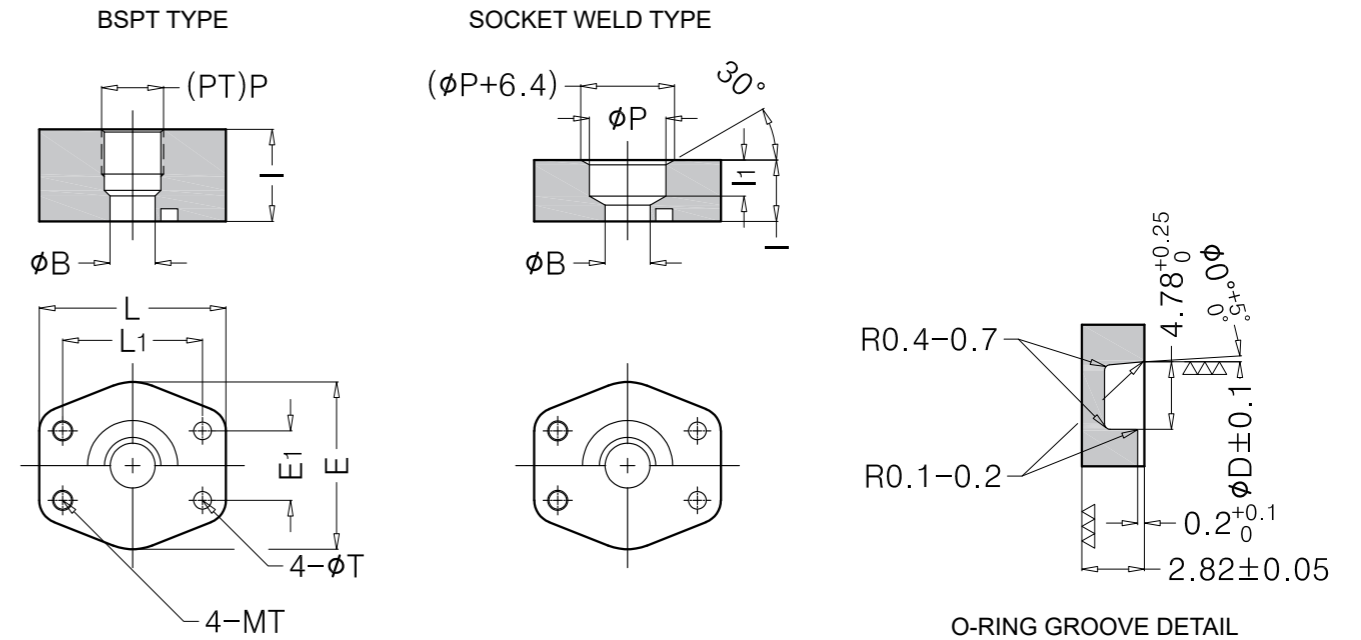
SOCKET WELD FLANGE SSWF



O-RING GROOVE DETAIL

Part No.	IN PIPE	P	B	D	I	I ₁	E	E ₁	L	L ₁	T	O-RING AS568
SSWF-15S	φ 21.7	22.2	16	28.35	10	3	46	17.5	54	38.1	M8 / φ 9	- 212
SSWF-20S	φ 27.2	27.7	21.5	31.52	12	4	52	22.2	65	47.6	M10	- 214
SSWF-25S	φ 34.0	34.5	28	39.45	12	4	60	26.2	70	52.4	φ 11	- 219
SSWF-32S	φ 42.7	43.2	36	50.62	12	4	73	30.2	79	58.7	φ 11	- 224
SSWF-40S	φ 48.6	49.1	42	56.97	15	4	82	35.7	94	69.9	M12	- 226
SSWF-50S	φ 60.5	61.0	53	66.50	15	4	94	42.9	102	77.8	φ 13.5	- 229
SSWF-65S	φ 76.3	77.0	68	82.37	15	4	106	50.8	114	88.9	φ 13.5	- 234
SSWF-80S	φ 89.1	90.0	80	95.07	20	5	130	61.9	135	106.4	φ 17.5	- 238
SSWF-90S	φ 101.6	102.4	93	107.77	20	5	136	69.9	152	120.7	φ 17.5	- 242
SSWF-100S	φ 114.3	115.1	106	123.65	25	6	146	77.8	162	130.2	φ 17.5	- 247
SSWF-125S	φ 139	140.6	130	145.87	25	6	170	92.1	190	152.4	φ 17.5	- 254

THREAD FLANGE, SOCKET WELD FLANGE STWF



O-RING GROOVE DETAIL

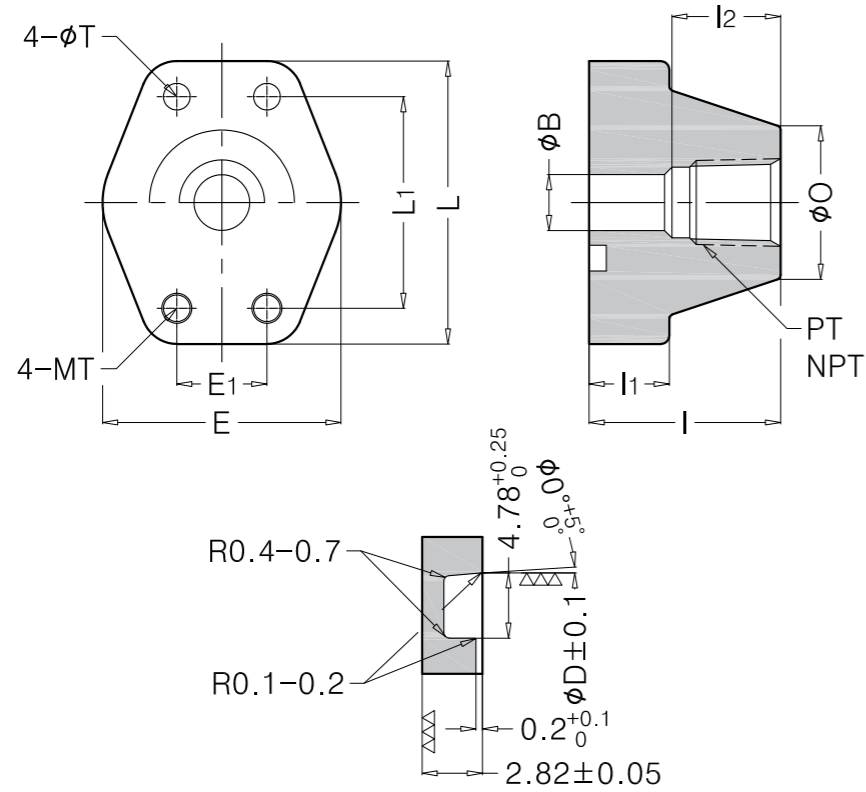
BSPT TYPE

Part No.	IN PIPE	P	B	D	I	E	E ₁	L	L ₁	T	O-RING AS568
STWF-15T	φ 21.7	1/2	14	26.75	26	46	17.5	54	38.1	M8 / φ 9	- 211
STWF-20T	φ 27.2	3/4	19	31.52	28	52	22.2	65	47.6	M10	- 214
STWF-25T	φ 34.0	1	25	39.45	32	60	26.2	70	52.4	φ 11	- 219
STWF-32T	φ 42.7	1 1/4	32	50.60	36	73	30.2	79	58.7	φ 11	- 222
STWF-40T	φ 48.6	1 1/2	38	56.97	42	82	35.7	94	69.9	M12	- 226
STWF-50T	φ 60.5	2	51	66.50	42	94	42.9	102	77.8	φ 13.5	- 229
STWF-65T	φ 76.3	2 1/2	63	82.37	48	106	50.8	114	88.9	φ 13.5	- 234
STWF-80T	φ 89.1	3	73	95.07	48	130	61.9	135	106.4	M16 / φ 17.5	- 238

SOCKET WELD TYPE

Part No.	IN PIPE	P	B	D	I	I ₁	E	E ₁	L	L ₁	T	O-RING AS568
STWF-15T	φ 21.7	22.2	14	26.75	16	3	46	17.5	54	38.1	M8 / φ 9	- 211
STWF-20T	φ 27.2	27.7	19	31.52	19	4	52	22.2	65	47.6	M10	- 214
STWF-25T	φ 34.0	34.5	25	39.45	23	4	60	26.2	70	52.4	φ 11	- 219
STWF-32T	φ 42.7	43.2	32	50.62	12	4	73	30.2	79	58.7	φ 11	- 222
STWF-40T	φ 48.6	49.1	38	56.97	15	4	82	35.7	94	69.9	M12	- 226
STWF-50T	φ 60.5	61.0	51	66.50	15	4	94	42.9	102	77.8	φ 13.5	- 229
STWF-65T	φ 76.3	77.0	63	82.37	15	4	106	50.8	114	88.9	φ 13.5	- 234
STWF-80T	φ 89.1	90.0	73	95.07	20	5	130	61.9	135	106.4	φ 17.5	- 238
STWF-90T	φ 101.6	102.4	89	107.77	20	5	136	69.9	152	120.7	φ 17.5	- 242
STWF-100T	φ 114.3	130.2	99	123.65	25	6	146	77.8	162	130.2	φ 17.5	- 247

THREAD BOSS TYPE FLANGE-BEST STBT



O-RING GROOVE DETAIL

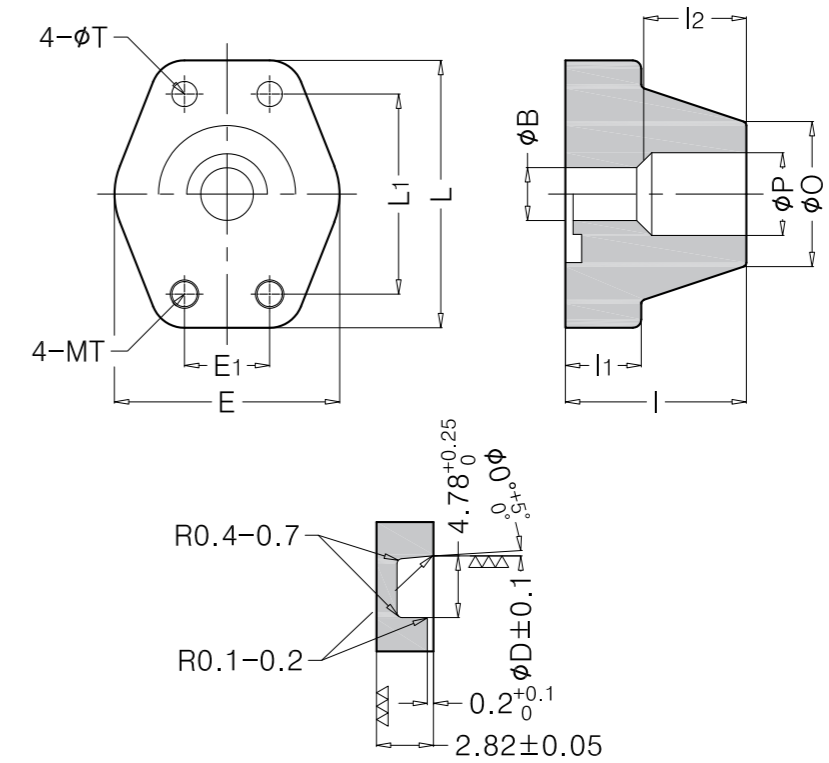
3000PSI

Part No.	IN PIPE	P	B	D	O	I	l ₁	l ₂	E	E ₁	L	L ₁	T	O-RING AS568
STBT-15T	φ 21.7	1/2	13	26.75	32	36	16	19	46	17.5	54	38.1	M8 / φ 9	-211
STBT-20T	φ 27.2	3/4	19	31.52	38	38	18	19	52	22.2	65	47.6	φ 9	-214
STBT-25T	φ 34.0	1	25	39.45	44	38	18	19	60	26.2	70	52.4	M10 / φ 11	-219
STBT-32T	φ 42.7	1 3/4	32	50.62	52	42	22	22	73	30.2	79	58.7	φ 11	-222
STBT-40T	φ 48.6	1 1/2	38	56.97	58	45	25	24	82	35.7	94	69.9	φ 11	-226
STBT-50T	φ 60.5	2	51	66.50	72	50	25	30	94	42.9	102	77.8	M12 / φ 13.5	-229
STBT-65T	φ 76.3	2 1/2	63	82.37	88	50	25	30	106	50.8	114	88.9	φ 13.5	-234
STBT-80T	φ 89.1	3	73	95.07	101	53	28	34	130	61.9	135	106.4	φ 13.5	-238
STBT-90T	φ 101.6	3 1/2	89	107.77	114	53	28	34	136	69.9	152	120.7	M16 / φ 17.5	-242
STBT-100T	φ 114.3	4	99	123.65	126	53	28	34	146	77.8	162	130.2	φ 17.5	-247

6000PSI

Part No.	IN PIPE	P	B	D	O	I	l ₁	l ₂	E	E ₁	L	L ₁	T	O-RING AS568
STBT-10TT	φ 17.3	3/8	11	26.75	28	36	16	19	46	18.2	54	40.5	M8 / φ 9	-211
STBT-20TT	φ 27.2	3/4	19	31.52	38	42	22	22	55	23.8	71	50.8	M10 / φ 11	-214
STBT-25TT	φ 34.0	1	25	39.45	44	45	25	24	65	27.8	81	57.2	M12 / φ 13.5	-219
STBT-32TT	φ 42.7	1 3/4	32	50.62	55	48	28	25	78	31.8	94	66.7	M14 / φ 15.5	-222
STBT-40TT	φ 48.6	1 1/2	38	56.97	60	50	30	28	94	36.5	112	79.4	M16 / φ 17.5	-226
STBT-50TT	φ 60.5	2	51	66.50	72	63	38	30	114	44.5	134	96.8	M20 / φ 22	-229

SOCKET WELD BOSS TYPE FLANGE SWBT



O-RING GROOVE DETAIL

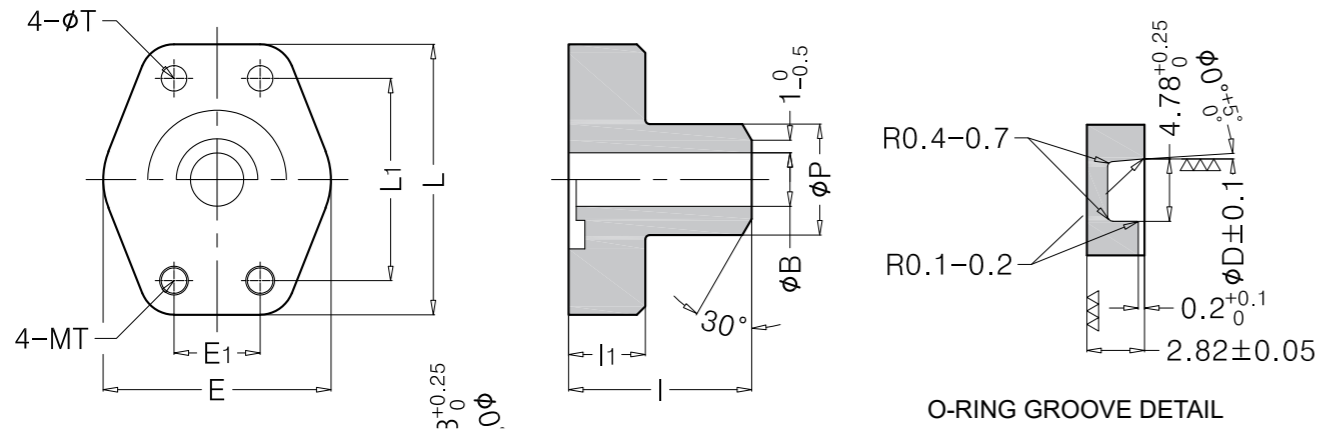
3000PSI

Part No.	IN PIPE	P	B	D	O	I	l ₁	l ₂	E	E ₁	L	L ₁	T	O-RING AS568
SWBT-15S	φ 21.7	22.2	13	26.75	32	36	16	19	46	17.5	54	38.1	M8 / φ 9	- 211
SWBT-20S	φ 27.2	27.7	19	31.52	38	38	18	19	52	22.2	65	47.6	φ 9	- 214
SWBT-25S	φ 34.0	34.5	25	39.45	44	38	18	19	60	26.2	70	52.4	M10 / φ 11	- 219
SWBT-32S	φ 42.7	43.2	32	50.62	52	42	22	22	73	30.2	79	58.7	φ 11	- 222
SWBT-40S	φ 48.6	49.1	38	56.97	58	45	25	24	82	35.7	94	69.9	φ 11	- 226
SWBT-50S	φ 60.5	61.0	51	66.50	72	50	25	30	94	42.9	102	77.8	M12 / φ 13.5	- 229
SWBT-65S	φ 76.3	77.0	63	82.37	88	50	25	30	106	50.8	114	88.9	φ 13.5	- 234
SWBT-80S	φ 89.1	90.0	73	95.07	101	53	28	34	130	61.9	135	106.4	φ 13.5	- 238
SWBT-90S	φ 101.6	102.4	89	107.77	114	53	28	34	136	69.9	152	120.7	M16 / φ 17.5	- 242
SWBT-100S	φ 114.3	115.1	99	123.65	126	53	28	34	146	77.8	162	130.2	φ 17.5	- 247

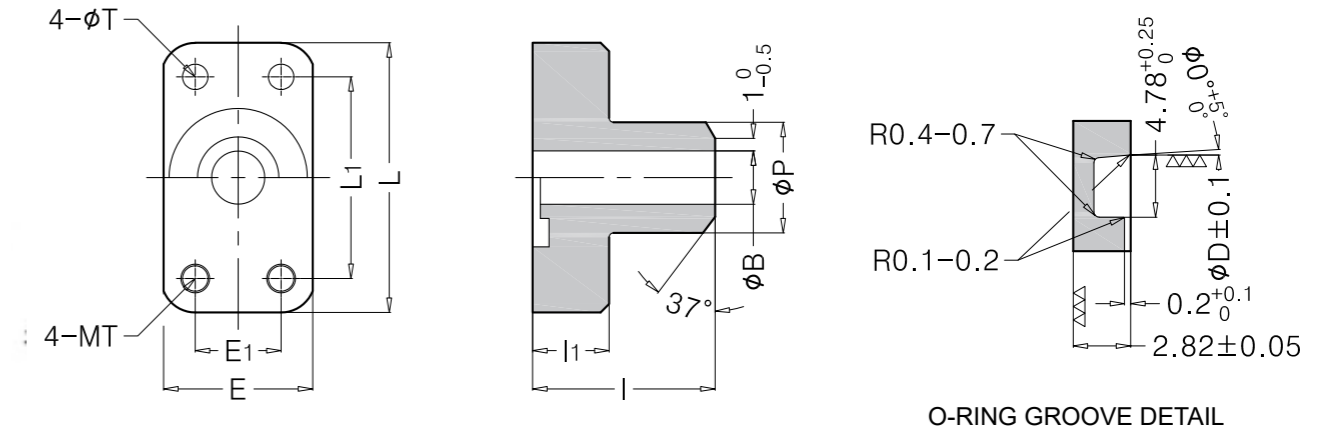
6000PSI

Part No.	IN PIPE	P	B	D	O	I	l ₁	l ₂	E	E ₁	L	L ₁	T	O-RING AS568
SWBT-10SS	φ 17.3	17.8	11	26.75	28	36	16	19	46	18.2	54	40.5	M8 / φ 9	- 211
SWBT-20SS	φ 27.2	27.7	19	31.52	38	42	22	22	55	23.8	71	50.8	M10 / φ 11	- 214
SWBT-25SS	φ 34.0	34.5	25	39.45	44	45	25	24	65	27.8	81	57.2	M12 / φ 13.5	- 219
SWBT-32SS	φ 42.7	43.2	32	50.62	55	48	28	25	78	31.8	94	66.7	M14 / φ 15.5	- 222
SWBT-40SS	φ 48.6	49.1	38	56.97	60	50	30	28	94	36.5	112	79.4	M16 / φ 17.5	- 226
SWBT-50SS	φ 60.5	61.0	51	66.50	72	63	38	30	114	44.5	134	96.8	M20 / φ 22	- 229

WELD ON FLANGE SWOF



RECTANGLE WELD ON FLANGE SRWF



3000PSI

Part No.	NORMAL FLANGE	SIZE PIPE	P	B	D	I	I ₁	E	E ₁	L	L ₁	T	O-RING AS568
SWOF-02	15 A	21.7	22.2	13	26.75	36	16	46	17.5	54	38.1	M8 / φ9	-211
SWOF-03	15 A	17.3	17.8	10	26.75	36	16	46	17.5	54	38.1	φ9	-211
SWOF-04	20 A	27.2	27.7	19	31.52	38	18	52	22.2	65	47.6		-214
SWOF-05	20 A	21.7	22.2	13	31.52	38	18	52	22.2	65	47.6		-214
SWOF-06	25 A	34.0	34.5	25	39.45	38	18	60	26.2	70	52.4		-219
SWOF-07	25 A	27.2	27.7	19	39.45	38	18	60	26.2	70	52.4		-219
SWOF-08	25 A	21.7	22.2	13	39.45	38	18	60	26.2	70	52.4	M10 / φ11	-219
SWOF-09	32 A	42.7	43.2	32	50.62	42	22	73	30.2	79	58.7	φ11	-222
SWOF-10	32 A	34.0	34.5	25	50.62	42	22	73	30.2	79	58.7		-222
SWOF-11	32 A	27.2	27.7	19	50.62	42	22	73	30.2	79	58.7		-222
SWOF-12	40 A	48.6	49.1	38	56.97	45	25	82	35.7	94	69.9		-226
SWOF-13	40 A	42.7	43.2	32	56.97	45	25	82	35.7	94	69.9	M12 / φ13.5	-226
SWOF-14	50 A	60.5	61.0	51	66.50	50	25	94	42.9	104	77.8	φ13.5	-229
SWOF-15	65 A	76.3	77.0	63	82.37	50	25	106	50.8	114	88.9		-234
SWOF-16	80 A	89.1	90.0	73	95.07	53	28	130	61.9	135	106.4	M16 / φ17.5	-238
SWOF-17	90 A	101.6	102.4	89	107.77	53	28	136	69.9	152	120.7	φ17.5	-242
SWOF-18	100 A	114.3	115.1	99	123.65	53	28	146	77.8	162	130.2		-247

6000PSI

Part No.	NORMAL FLANGE	SIZE PIPE	P	B	D	I	I ₁	E	E ₁	L	L ₁	T	O-RING AS568
SWOF-100	10A	17.3	17.8	11	26.75	38	18	46	18.2	54	40.5	M8 / φ9	-211
SWOF-200	20A	27.2	27.7	19	31.52	42	22	55	23.8	71	50.8	M10 / φ11	-214
SWOF-250	25A	34.0	34.5	25	39.45	45	25	65	27.8	81	57.2	M12 / φ13.5	-219
SWOF-320	32A	42.7	43.2	32	50.62	48	28	78	31.8	94	66.7	M12 / φ13.5	-222
SWOF-400	40A	48.6	49.1	38	56.97	50	30	94	36.5	112	79.4	M16 / φ17.5	-226
SWOF-500	50A	60.5	61.0	51	66.50	63	38	114	44.5	134	96.8	M16 / φ17.5	-229

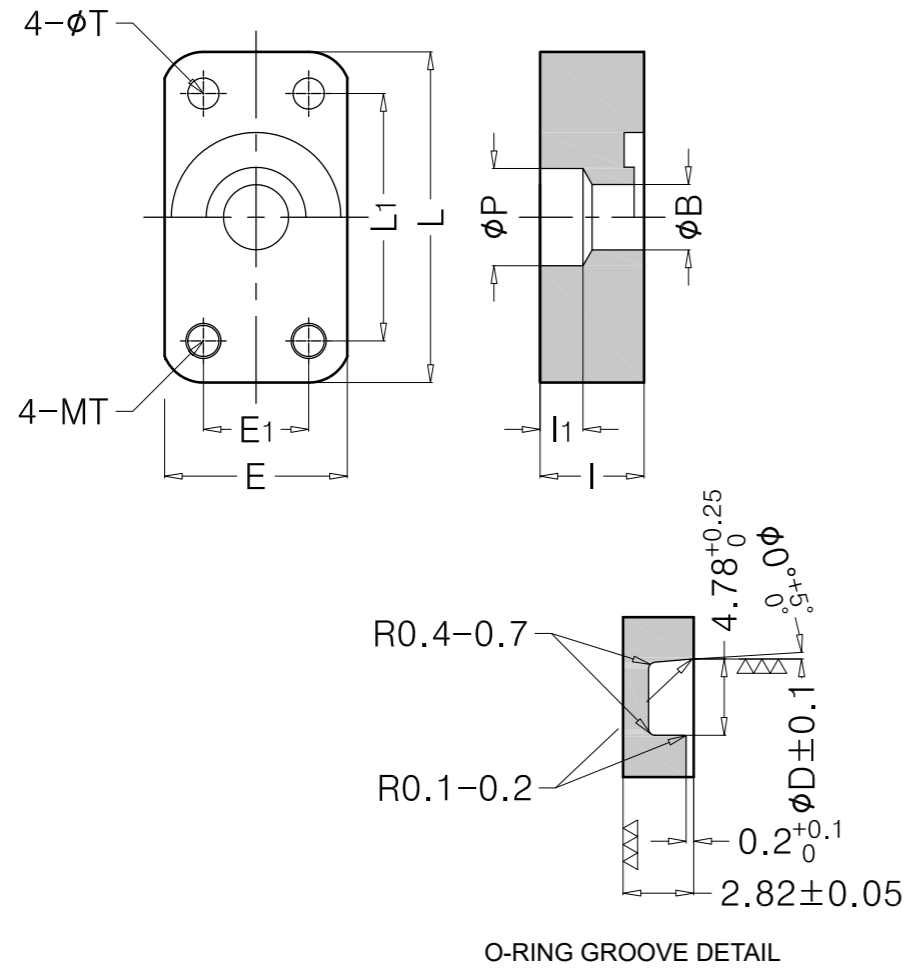
3000PSI

Part No.	NORMAL FLANGE	SIZE PIPE	P	B	D	I	I ₁	E	E ₁	L	L ₁	T	O-RING AS568
SRWF-02	15A	21.7	22.2	13	26.75	36	16	34	17.5	54	38.1	M8 / φ9	-211
SRWF-03	15A	17.3	17.8	10	26.75	36	16	34	17.5	54	38.1	φ9	-211
SRWF-04	20A	27.2	27.7	19	31.52	38	18	41	22.2	65	47.6		-214
SRWF-05	20A	21.7	22.2	13	31.52	38	18	41	22.2	65	47.6		-214
SRWF-06	25A	34.0	34.5	25	39.45	38	18	48	26.2	70	52.4	M10 / φ11	-219
SRWF-07	25A	27.2	27.7	19	39.45	38	18	48	26.2	70	52.4	φ11	-219
SRWF-08	25A	21.7	22.2	13	39.45	38	18	48	26.2	70	52.4		-219
SRWF-09	32A	42.7	43.2	32	50.62	42	22	54	30.2	79	58.7	M12 / φ13.5	-222
SRWF-10	32A	34.0	34.5	25	50.62	42	22	54	30.2	79	58.7	φ13.5	-222
SRWF-11	32A	27.2	27.7	19	50.62	42	22	54	30.2	79	58.7		-222
SRWF-12	40A	48.6	49.1	38	56.97	45	25	64	35.7	94	69.9	M16 / φ17.5	-226
SRWF-13	40A	42.7	43.2	32	56.97	45	25	64	35.7	94	69.9	φ17.5	-226

6000PSI

Part No.	NORMAL FLANGE	SIZE PIPE	P	B	D	I	I ₁	E	E ₁	L	L ₁	T	O-RING AS568
SRWF-20	15A	21.7	22.2	13	26.75	38	18	34	18.2	54	40.5	M8 / φ9	-211
SRWF-30	15A	17.3	17.8	10	26.75	38	18	34	18.2	54	40.5	φ9	-211
SRWF-40	20A	27.2	27.7	19	31.52	42	22	48	23.8	71	50.8	M10 / φ11	-214
SRWF-50	20A	21.7	22.2	13	31.52	42	22	48	23.8	71	50.8	φ11	-214
SRWF-60	25A	34.0	34.5	25	39.45	45	25	54	27.8	81	57.2	M12 / φ13.5	-219
SRWF-70	25A	27.2	27.7	19	39.45	45	25	54	27.8	81	57.2	φ13.5	-219
SRWF-80	25A	21.7	22.2	13	39.45	45	25	54	27.8	81	57.2		-219
SRWF-90	32A	42.7	43.2	32	50.62	48	28	60	31.8	94	66.7	M14 / φ15.5	-222
SRWF-100	32A	34.0	34.5	25	50.62	48	28	60	31.8	94	66.7	φ15.5	-222
SRWF-110	32A	27.2	27.7	19	50.62	48	28	60	31.8	94	66.7		-222
SRWF-120	40A	48.6	49.1	38	56.97	50	30	70	36.5	112	79.4	M16 / φ17.5	-226
SRWF-130	40A	42.7	43.2	32	56.97	50	30	70	36.5	112	79.4	φ17.5	-226

RECTANGLE SOCKET WELD FLANGE SRSW

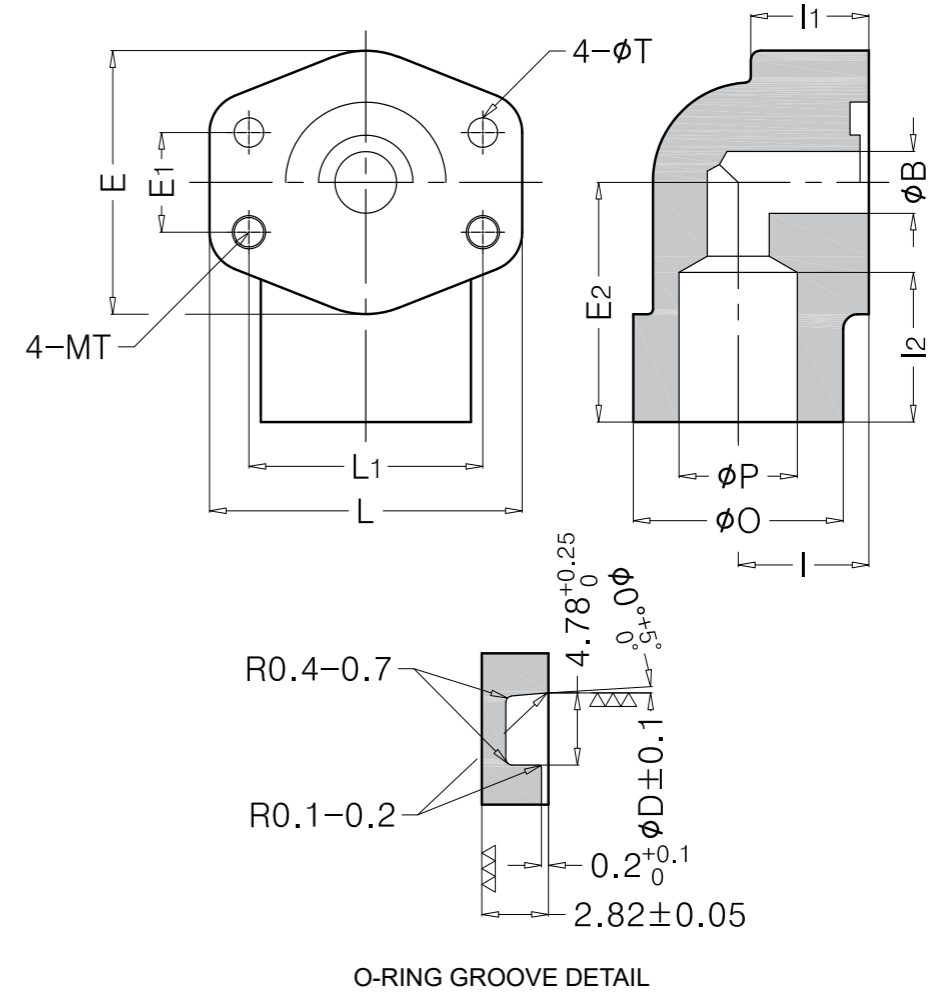


O-RING GROOVE DETAIL

3000PSI

Part No.	NOMINAL FLANGE	SIZE PIPE	P	B	D	I	I ₁	E	E ₁	L	L ₁	T	O-RING AS568
SRSW-02	15A	21.7	22.2	13	26.75	16	6	34	17.5	54	38.1	M8 / φ9	-211
SRSW-03	15A	17.3	17.8	10	26.75	16	6	34	17.5	54	38.1	φ9	-211
SRSW-04	20A	27.2	27.7	19	31.52	16	6	41	22.2	65	47.6		-214
SRSW-05	20A	21.7	22.2	13	31.52	16	6	41	22.2	65	47.6		-214
SRSW-06	25A	34.0	34.5	25	39.45	16	6	48	26.2	70	52.4		-219
SRSW-07	25A	27.2	27.7	19	39.45	16	6	48	26.2	70	52.4	M10 / φ11	-219
SRSW-08	25A	21.7	22.2	13	39.45	16	6	48	26.2	70	52.4	φ11	-219
SRSFW-09	32A	42.7	43.2	32	50.62	16	6	54	30.2	79	58.7		-222
SRSFW-10	32A	34.0	34.5	25	50.62	16	6	54	30.2	79	58.7		-222
SRSFW-11	32A	27.2	27.7	19	50.62	16	6	54	30.2	79	58.7		-222
SRSFW-12	40A	48.6	49.1	38	56.97	16	6	64	35.7	94	69.9		-226
SRSFW-13	40A	42.7	43.2	32	56.97	16	6	64	35.7	94	69.9	M12 / φ13.5	-226
SRSFW-14	50A	60.5	61.0	51	66.50	16	6	76	42.9	102	77.8	φ13.5	-229
SRSFW-15	50A	48.6	49.1	38	66.50	16	6	76	42.9	102	77.8		-229

ELBOW FLANGE SOCKET WELD SWFL



O-RING GROOVE DETAIL

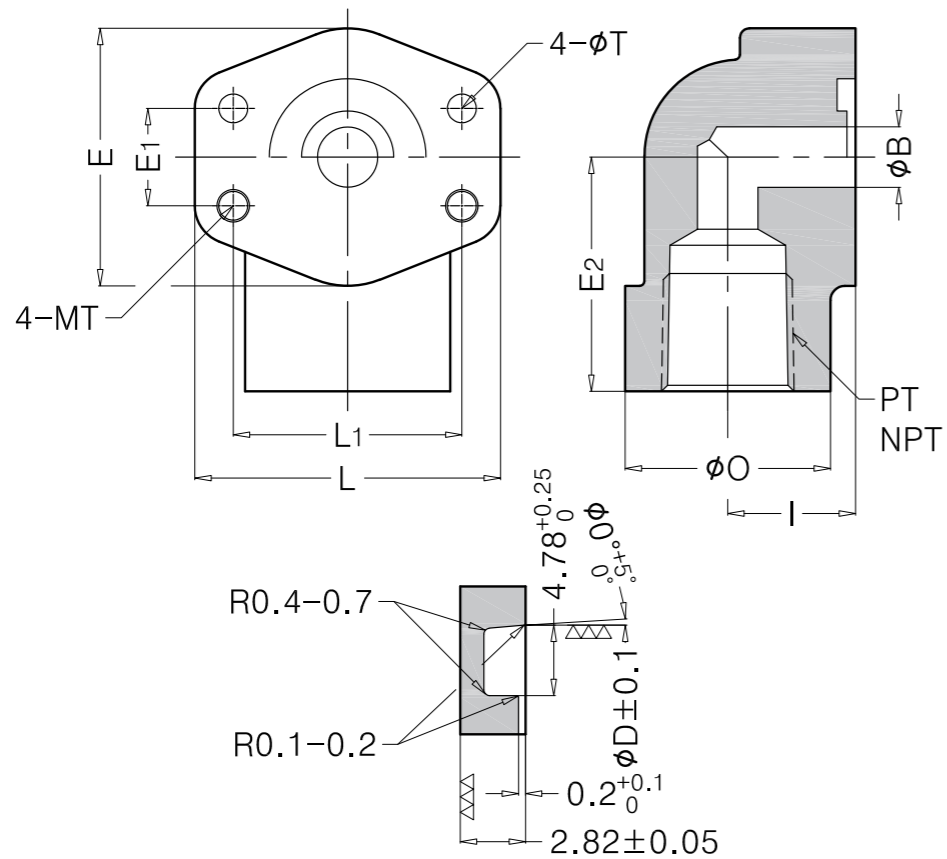
3000PSI

Part No.	IN PIPE	P	B	D	O	I	I ₁	I ₂	E	E ₁	E ₂	L	L ₁	T	O-RING AS568
SWFL-15T	φ21.7	1/2	13	26.75	32	20	20	19	46	17.5	37	54	38.1	M8 / φ9	-211
SWFL-20T	φ27.2	3/4	19	31.52	38	24	24	19	52	22.2	38	65	47.6		-214
SWFL-25T	φ34.0	1	25	39.45	44	28	28	19	60	26.2	44	70	52.4	M10 / φ11	-219
SWFL-32T	φ42.7	1 3/4	32	50.62	52	34	34	22	73	30.2	52	79	58.7		-222
SWFL-40T	φ48.6	1 1/2	38	56.97	58	38	38	24	82	35.7	58	94	69.9	M12 / φ13.5	-226
SWFL-50T	φ60.5	2	51	66.50	72	42	42	30	94	42.9	72	102	77.8		-229

6000PSI

Part No.	IN PIPE	P	B	D	O	I	I ₁	I ₂	E	E ₁	E ₂	L	L ₁	T	O-RING AS568
SWFL-15TT	φ21.7	1/2	13	26.75	32	20	20	19	46	18.2	37	54	40.5	M8 / φ9	-211
SWFL-20TT	φ27.2	3/4	19	31.52	38	28	28	22	55	23.8	43	71	50.8	M10 / φ11	-214
SWFL-25TT	φ34.0	1	25	39.45	44	34	34	24	65	27.8	44	81	57.2	M12 / φ13.5	-219
SWFL-32TT	φ42.7	1 3/4	32	50.62	55	38	38	25	78	31.8	55	94	66.7	M14 / φ15.5	-222
SWFL-40TT	φ48.6	1 1/2	38	56.97	60	42	42	28	94	36.5	60	112	79.4	M16 / φ17.5	-226

SOCKET WELD FLANGE 90°
SWFL



O-RING GROOVE DETAIL

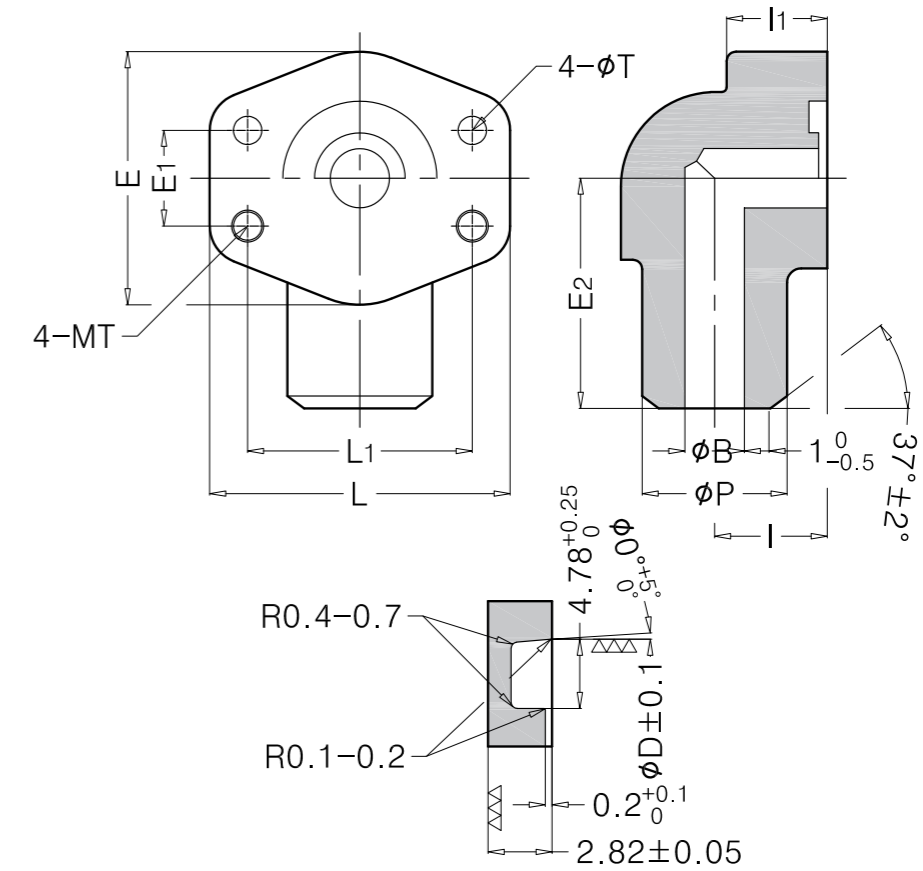
3000PSI

Part No.	IN PIPE	P	B	D	O	I	l ₁	l ₂	E	E ₁	E ₂	L	L ₁	T	O-RING AS568
SWFL-15S	φ21.7	22.2	13	26.75	32	20	20	19	46	17.5	37	54	38.1	M8	-211
SWFL-20S	φ27.2	27.7	19	31.52	38	24	24	19	52	22.2	38	65	47.6	φ9	-214
SWFL-25S	φ34.0	34.5	25	39.45	44	28	28	19	60	26.2	44	70	52.4	M10	-219
SWFL-32S	φ42.7	43.2	32	50.62	52	34	34	22	73	30.2	52	79	58.7	φ11	-222
SWFL-40S	φ48.6	49.1	38	56.97	58	38	38	24	82	35.7	58	94	69.9	M12	-226
SWFL-50S	φ60.5	61.0	51	66.50	72	42	42	30	94	42.9	72	102	77.8	φ13.5	-229

6000PSI

Part No.	IN PIPE	P	B	D	O	I	l ₁	l ₂	E	E ₁	E ₂	L	L ₁	T	O-RING AS568
SWFL-15SS	φ21.7	22.2	13	26.75	32	20	20	19	46	18.2	37	54	40.5	M8	φ9 -211
SWFL-20SS	φ27.2	27.7	19	31.52	38	28	28	19	55	23.8	43	71	50.8	M10	φ11 -214
SWFL-25SS	φ34.0	34.5	25	39.45	44	34	34	19	65	27.8	51	81	57.2	M12	φ13.5 -219
SWFL-32SS	φ42.7	43.2	32	50.62	55	38	38	22	78	31.8	56	94	66.7	M14	φ15.5 -222
SWFL-40SS	φ48.6	49.1	38	56.97	60	42	42	24	94	36.5	65	112	79.4	M16	φ17.5 -226

WELD ON FLANGE 90°
SWOFL



O-RING GROOVE DETAIL

3000PSI

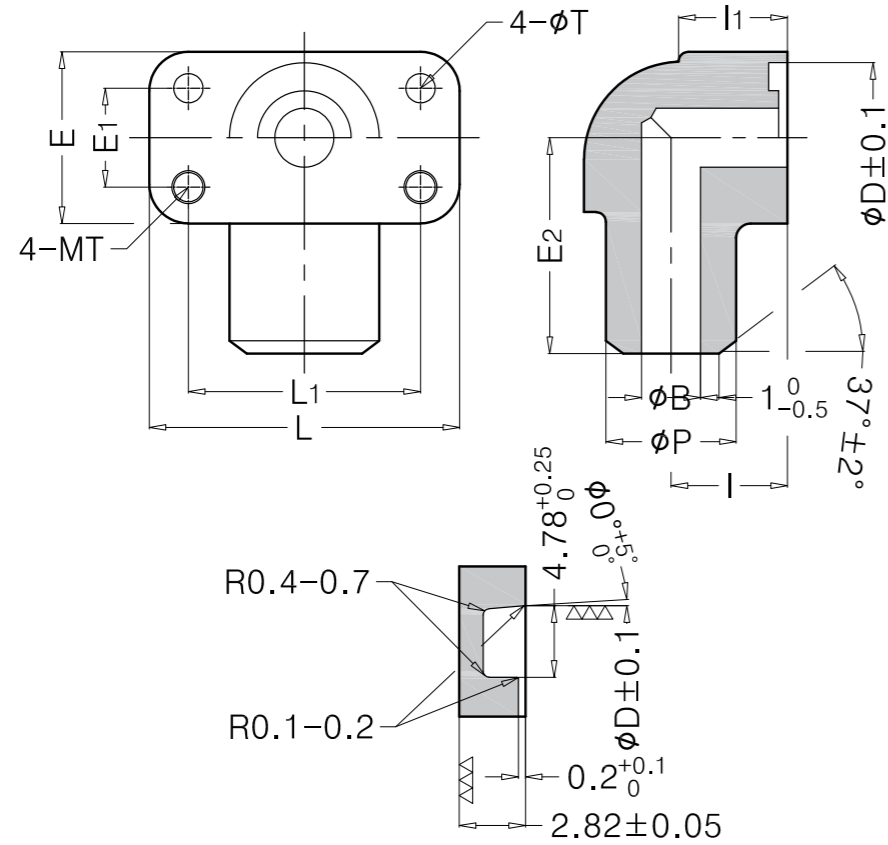
Part No.	IN PIPE	P	B	D	I	l ₁	E	E ₁	E ₂	L	L ₁	T	O-RING AS568
SWOFL-15W	φ21.7	22.2	13	26.75	20	20	46	17.5	37	54	38.1	M8	φ9 -211
SWOFL-20W	φ27.2	27.7	19	31.52	24	24	52	22.2	38	65	47.6	φ9	-214
SWOFL-25W	φ34.0	34.5	25	39.45	28	28	60	26.2	44	70	52.4	M10	φ11 -219
SWOFL-32W	φ42.7	43.2	32	50.62	34	34	73	30.2	52	79	58.7	φ11	-222
SWOFL-40W	φ48.6	49.1	38	56.97	38	38	82	35.7	58	94	69.9	M12	φ13.5 -226
SWOFL-50W	φ60.5	61.0	51	66.50	42	42	94	42.9	72	102	77.8	φ13.5	-229

6000PSI

Part No.	IN PIPE	P	B	D	I	l ₁	E	E ₁	E ₂	L	L ₁	T	O-RING AS568
SWOFL-15WW	φ21.7	22.2	13	26.75	20	20	46	18.2	37	54	40.5	M8	φ9 -211
SWOFL-20WW	φ27.2	27.7	19	31.52	24	28	55	23.8	43	71	50.8	M10	φ11 -214
SWOFL-25WW	φ34.0	34.5	25	39.45	28	34	65	27.8	51	81	57.2	M12	φ13.5 -219
SWOFL-32WW	φ42.7	43.2	32	50.62	34	38	78	31.8	56	94	66.7	M14	φ15.5 -222
SWOFL-40WW	φ48.6	49.1	38	56.97	38	42	94	36.5	65	112	79.4	M16	φ17.5 -226

WELD ON RECTANGLE FLANGE 90°

SWRFL



O-RING GROOVE DETAIL

3000PSI

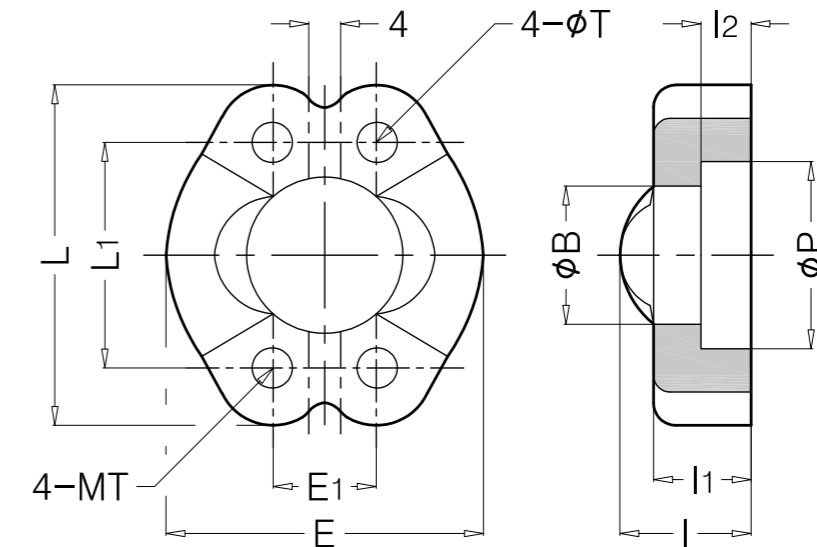
Part No.	NORMAL FLANGE	SIZE PIPE	P	B	D	I	I ₁	E	E ₁	E ₂	L	L ₁	T	O-RING AS568
SWRFL-15W	15A	21.7	22.2	13	26.75	20	20	34	17.5	37	54	38.1	M8 / φ9	-211
SWRFL-20W	20A	27.2	27.7	19	31.52	24	24	42	22.2	41	65	47.6		-214
SWRFL-25W	25A	34.0	34.5	23	39.45	28	28	48	26.2	44	70	52.4	M12 / φ13.5	-219
SWRFL-32W	32A	42.7	43.2	31	50.62	34	34	56	30.2	48	79	58.7		-222
SWRFL-40W	40A	48.6	49.1	35	56.97	38	38	64	35.7	52	94	69.9	M16 / φ17.5	-226
SWRFL-50W	50A	60.5	61.0	48	66.50	42	42	72	42.9	56	102	77.8		-229

6000PSI

Part No.	NORMAL FLANGE	SIZE PIPE	P	B	D	I	I ₁	E	E ₁	E ₂	L	L ₁	T	O-RING AS568
SWRFL-15WW	15A	21.7	22.2	13	26.75	20	20	34	18.2	37	54	40.5	M8 / φ9	-211
SWRFL-20WW	20A	27.2	27.7	19	31.52	28	28	48	23.8	44	71	50.8	M10 / φ11	-214
SWRFL-25WW	25A	34.0	34.5	23	39.45	34	34	54	27.8	47	81	57.2	M12 / φ13.5	-219
SWRFL-32WW	32A	42.7	43.2	31	50.62	38	38	60	31.8	50	94	66.7	M14 / φ15.5	-222
SWRFL-40WW	40A	48.6	49.1	35	56.97	42	42	70	36.5	55	112	79.4	M16 / φ17.5	-226

SPLIT FLANGE

SSF



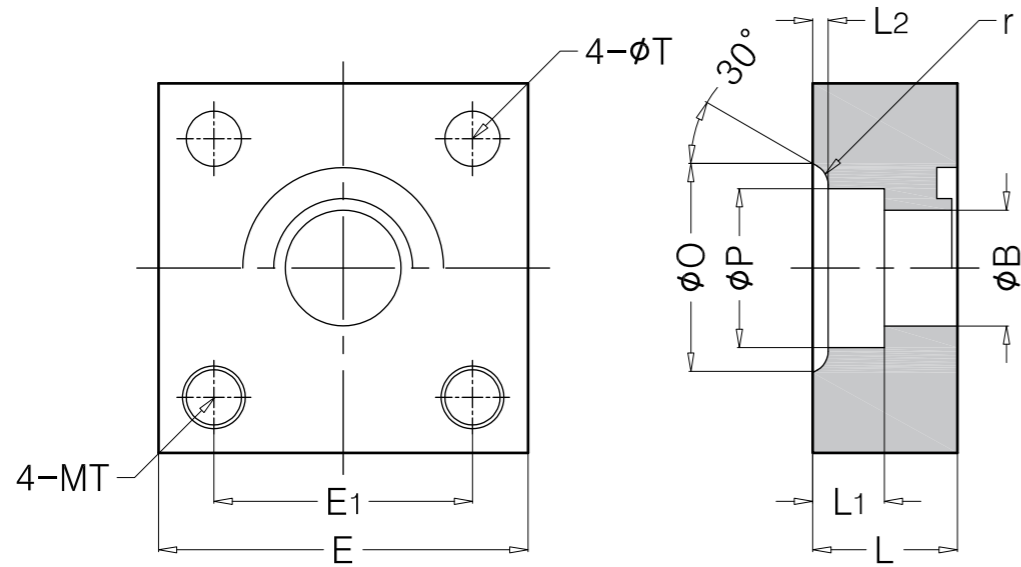
3000PSI

Part No.	IN PIPE	P	B	I	I ₁	I ₂	E	E ₁	L	L ₁	T
SSF-15	15A	31.0	24.3	19	13	6.2	46	17.5	54	38.1	M8 / φ9
SSF-20	20A	38.9	32.1	22	14	6.2	52	22.2	65	47.6	
SSF-25	25A	45.2	38.5	24	16	7.5	60	26.2	70	52.4	M10 / φ10.5
SSF-32	32A	51.6	43.7	22	14	7.5	73	30.2	79	58.7	
SSF-40	40A	61.1	50.8	25	16	7.5	82	35.7	94	69.9	
SSF-50	50A	72.2	62.7	26	16	9.0	94	42.9	102	77.8	M12 / φ13.5
SSF-65	65A	84.9	74.9	38	19	9.0	106	50.8	114	88.9	
SSF-80	80A	102.4	90.9	41	55	9.0	130	61.9	135	106.4	
SSF-90	90A	115.3	102.3	45	24	10.8	136	69.9	152	120.7	M16 / φ17.5
SSF-100	100A	128.4	115.3	45	24	10.8	152	77.8	162	130.2	

6000PSI

Part No.	IN PIPE	P	B	I	I ₁	I ₂	E	E ₁	L	L ₁	T
SSF-150	15A	32.5	24.6	22	16	7.2	46	18.2	54	40.5	M8 / φ9
SSF-200	20A	42.0	32.5	23	19	8.3	55	23.8	71	50.8	M10 / φ10.5
SSF-250	25A	48.4	38.9	33	24	9.0	65	27.8	81	57.2	M12 / φ12.5
SSF-320	32A	54.8	44.5	38	27	9.8	78	31.8	94	66.7	M14 / φ15.5
SSF-400	40A	64.3	51.6	43	30	12.1	94	36.5	112	79.4	M16 / φ17.5
SSF-500	50A	80.2	67.6	52	37	12.1	114	44.5	134	96.8	M20 / φ22

SQUARE FLANGE-SOCKET WELD SFSW



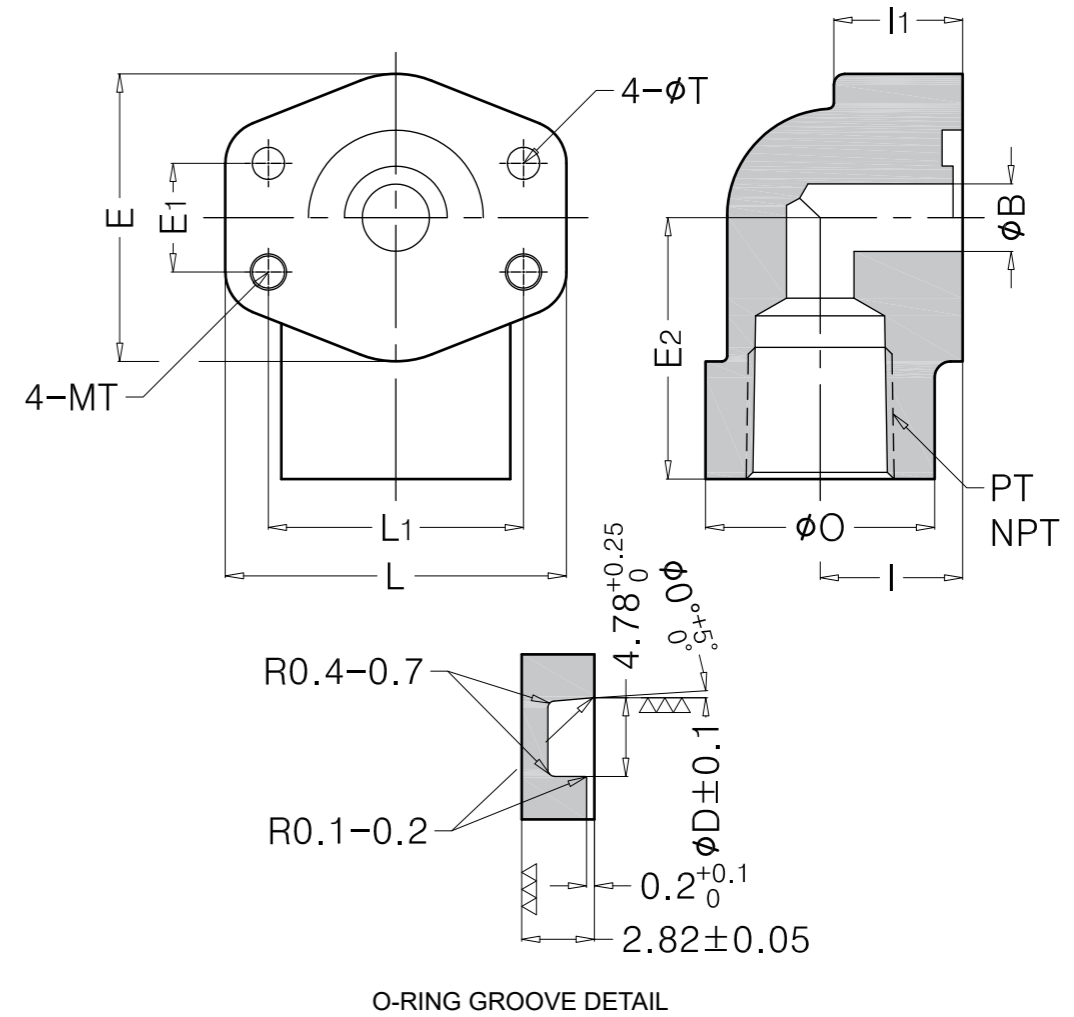
3000PSI

Part No.	IN PIPE	P	B	D	O	r	E	E ₁	L	L ₁	L ₂	T	O-RING
SFSW-15	21.7	22.2	16	30	32	5	63	40	22	11	3.5	M10 / φ11	G25
SFSW-20	27.2	27.7	20	35	38	5	68	45	22	12	4.0	φ11	G30
SFSW-25	34.0	34.5	25	40	45	5	80	53	28	14	4.0	M12 / φ13.5	G35
SFSW-32	42.7	43.2	31.5	45	56	5	90	63	28	16	6.0	φ13.5	G40
SFSW-40	48.6	49.1	37.5	55	63	5	100	70	36	18	7.0	M16 / φ17.5	G50
SFSW-50	60.5	61.1	47.5	65	75	5	112	80	36	20	7.0	φ17.5	G60
SFSW-65	76.3	77.1	60	80	95	5	140	100	45	22	9.5	M20 / φ22	G75
SFSW-80	89.1	90.0	71	90	108	6	155	112	45	25	11.0	M22 / φ24	G85

6000PSI

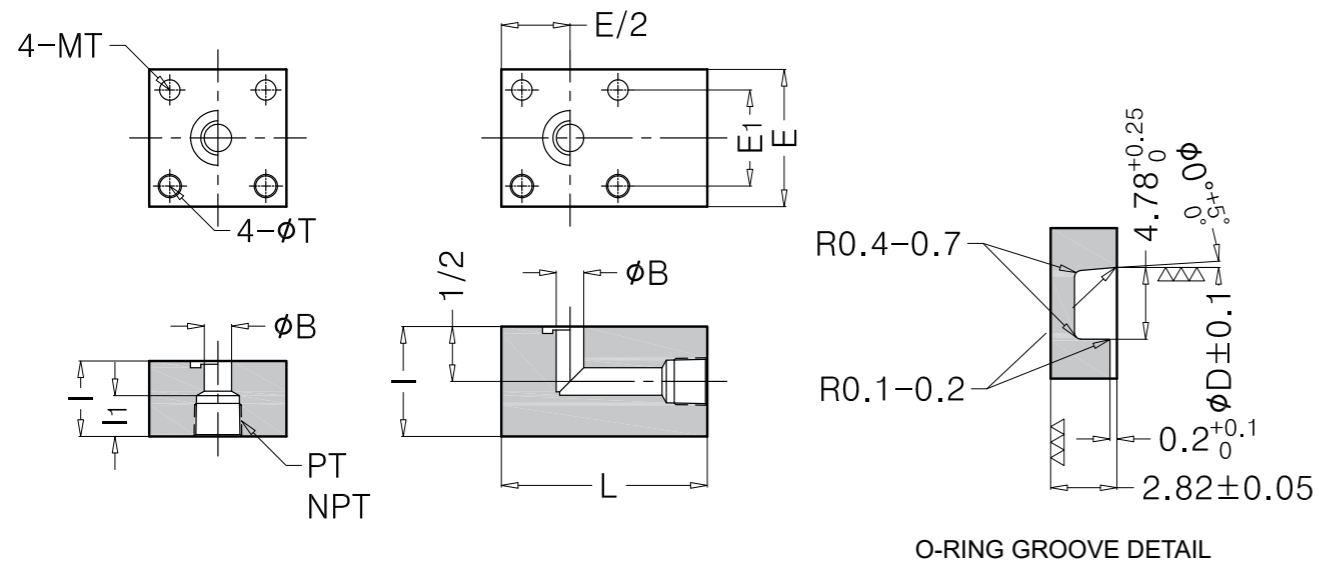
Part No.	IN PIPE	P	B	D	O	r	E	E ₁	L	L ₁	L ₂	T	O-RING
SFSW-150	21.7	22.2	16	30	32	5	54	36	22	11	3.5	M10 / φ11	G25
SFSW-200	27.2	27.7	20	35	38	5	58	40	22	12	4.0	φ11	G30
SFSW-250	34.0	34.5	25	40	45	5	68	48	28	14	4.0	M12 / φ13.5	G35
SFSW-320	42.7	43.2	31.5	45	56	5	76	56	28	16	6.0	φ13.5	G40
SFSW-400	48.6	49.1	37.5	55	63	5	92	65	36	18	7.0	M16 / φ17.5	G50
SFSW-500	60.5	61.1	47.5	65	75	5	100	73	36	20	7.0	φ17.5	G60
SFSW-650	76.3	77.1	60	80	95	5	128	92	45	22	9.5	M20 / φ22	G75
SFSW-800	89.1	90.0	71	90	108	6	140	103	45	25	11.0	M22 / φ24	G85

THREAD FLANGE 90° STFL

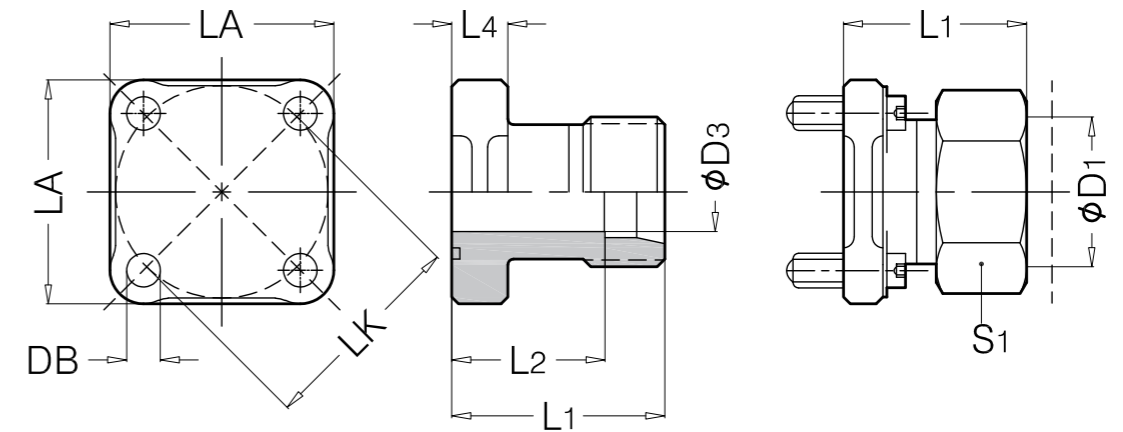


Part No.	PT/NPT	B	D	O	E	E ₁	L	L ₁	T	O-RING
STFL-15	1/2	16	30	32	54	36	40	11	M19 / φ11	G25
STFL-20	3/4	20	35	38	58	40	45	12	φ11	G30
STFL-25	1	25	40	45	68	48	50	14	M12 / φ13.5	G35
STFL-32	1 1/4	31.5	45	56	76	56	63	16	φ13.5	G40
STFL-40	1 1/2	37.5	55	63	92	65	71	18	M16 / φ17.5	G50
STFL-50	2	47.5	65	75	100	73	85	20	φ17.5	G60
STFL-65	2 1/2	60	80	95	128	92	106	22	M20 / φ22	G75
STFL-80	3	71	90	108	140	103	118	25	M22 / φ24	G85

SQUARE & ELBOW FLANGE-THREAD TYPE SFTL



GEAR PUMP FLANGE SBFG



SQUARE THREAD FLANGE-BSPT

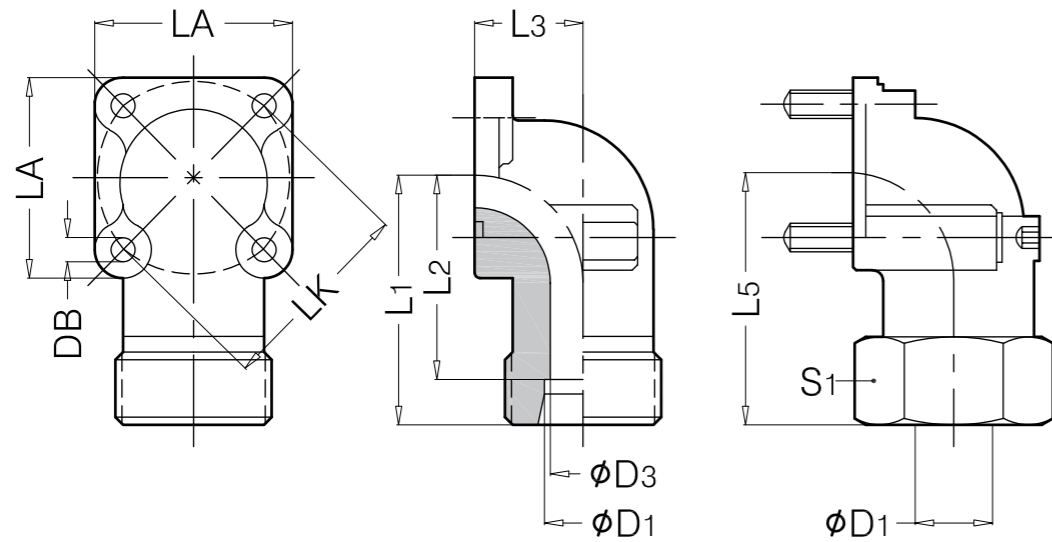
Part No.	NORMAL FLANGE	SIZE PIPE	P NPT	B	D	I	I1	E	E1	L	T	O-RING AS568
SFTL-15T	15A	21.7	1/2	13	26.75	32	19	58	36.6	-	M10	- 211
SFTL-20T	20A	27.7	3/4	19	31.52	32	19	58	36.6	-	φ 11	- 214
SFTL-25T	25A	34.5	1	25	39.45	38	19	76	50.8	-	M12	- 219
SFTL-32T	32A	42.7	1 1/4	32	50.62	38	22	76	50.8	-	φ 13.5	- 222
SFTL-40T	40A	48.6	1 1/2	38	56.97	45	24	102	69.8	-	M16	- 226
SFTL-50T	50A	60.5	2	51	66.50	45	30	102	69.8	-	φ 17.5	- 229
SFTL-65T	65A	76.3	2 1/2	63	82.37	57	30	140	95.2	-	M22	- 234
SFTL-80T	80A	89.1	3	73	95.07	57	34	140	95.2	-	φ 24	- 238

THREAD FLANGE-90° BSPT

Part No.	NORMAL FLANGE	SIZE PIPE	P NPT	B	D	I	I1	E	E1	L	T	O-RING AS568
SFTL-15TT	15A	21.7	1/2	13	26.75	38	19	58	36.6	80	M10	- 211
SFTL-20TT	20A	27.7	3/4	19	31.52	36	19	58	36.6	80	φ 11	- 214
SFTL-25TT	25A	34.5	1	25	39.45	51	25.5	76	50.8	105	M12	- 219
SFTL-32TT	32A	42.7	1 1/4	32	50.62	51	25.5	76	50.8	105	φ 13.5	- 222
SFTL-40TT	40A	48.6	1 1/2	38	56.97	76	38	102	69.8	130	M16	- 226
SFTL-50TT	50A	60.5	2	51	66.50	76	38	102	69.8	130	φ 17.5	- 229
SFTL-65TT	65A	76.3	2 1/2	63	82.37	102	51	140	95.2	181	M22	- 234
SFTL-80TT	80A	89.1	3	73	95.07	102	51	140	95.2	181	φ 24	- 238

LK	D1	D3	L1	L2	LA	S1	DB	Screws (metr.)	O-ring	PN(bar) A3C
35	10L	8	30	23.0	39	19	6.4	M6 X 22	20 X 2.5	250
35	12L	10	30	23.0	39	22	6.4	M6 X 22	20 X 2.5	250
35	15L	12	30	23.0	39	27	6.4	M6 X 22	20 X 2.5	250
35	16S	12	30	21.5	39	30	6.4	M6 X 22	20 X 2.5	400
40	15L	12	35	28.0	42	27	6.4	M6 X 22	26 X 2.5	250
40	18L	15	35	27.5	42	32	6.4	M6 X 22	26 X 2.5	160
40	22L	19	35	27.5	42	36	6.4	M6 X 22	26 X 2.5	160
40	28L	24	35	27.5	42	41	6.4	M6 X 22	26 X 2.5	100
55	20S	16	50	39.5	57	36	8.4	M8 X 25	32 X 2.5	400

GEAR PUMP FLANGE 90° ELBOW
SBFW



LK	D1	D3	L1	L2	L3	L5	LA	S1	DB	Screws		O-ring	PN(bar) A3C
										2 pieces(metr.)	2 pieces(metr.)		
35	12L	10	37.5	30.5	16.5	47	39	22	6.4	M6 X 22	M6 X 35	20 X 2.5	250
35	15L	12	37	30.0	16.5	46	39	27	6.4	M6 X 22	M6 X 35	20 X 2.5	250
35	16S	12	38	29.5	20.0	48	39	30	6.4	M6 X 22	M6 X 40	26 X 2.5	400
35	20S	16	45	34.5	25.0	45	39	36	6.4	M6 X 22	M6 X 45	20 X 2.5	400
40	15L	12	37	30.0	22.5	46	42	27	6.4	M6 X 22	M6 X 22	26 X 2.5	250
40	18L	15	38	30.5	22.5	47	42	32	6.4	M6 X 22	M6 X 22	26 X 2.5	160
40	22L	19	38	30.5	22.5	47.5	42	36	6.4	M6 X 22	M6 X 22	26 X 2.5	160
40	28L	25	40	32.5	28.0	49	42	41	6.4	M6 X 20	M6 X 50	26 X 2.5	100
40	35L	30	41	30.5	34.0	52	42	50	6.4	M6 X 22	M6 X 60	26 X 2.5	100
40	20S	19	38	27.5	22.5	50	42	36	6.4	M6 X 22	M6 X 45	26 X 2.5	400
55	20S	16	45	34.5	24.0	56	58	36	8.4	M8 X 25	M8 X 50	32 X 2.5	400
55	22L	16	43	35.5	24.0	52.5	58	36	8.4	M8 X 25	M8 X 50	32 X 2.5	160
55	25S	20	49	37.0	30.0	61	58	46	8.4	M8 X 25	M8 X 55	32 X 2.5	400
55	35L	30	49	38.5	32.0	62	58	50	8.4	M8 X 25	M8 X 60	32 X 2.5	100



COUPLER



These Hydraulic Valves are designed to meet working pressure up to 500 bar and Sekwang normally uses Carbon steel. Also, we are flexible to change the thread type as customer's requirement. The total system design must be taken into consideration to ensure optimal performance and safety.