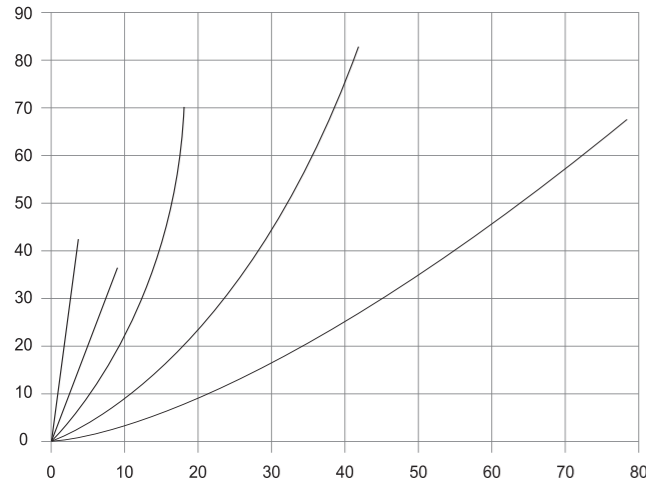


## QUICK RELEASE COUPLING (ISO - A) VALVE

**SPA**



Example	S	PA	4	0	PFF	4	ST	N
Sekwang								
<b>SERIES</b>	SP SERIES (POPPET) SPA (ISO 7241A)							
<b>Body size</b>	04	1/4	6.3					
	06	3/8	10					
	08	1/2	12.5					
	12	3/4	19					
	16	1"	25					
<b>Part</b>	0	Coupler male & Female set						
	1	Female						
	2	Male						
<b>Connecting screw</b>	PFF							
	PFM							
	PTF							
	PTM							
	NPTF							
	NPTM							
	BSPTF							
	BSPTM							
	BSPFF							
	BSPFM							
<b>Connecting screw size</b>	04	1/4						
	06	3/8						
	08	1/2						
	12	3/4						
	16	1"						
<b>Material</b>	ST	Steel						
	SS	Stainless steel						
	BR	Brass						
<b>Seal rubber</b>	NBR							
	HNBR							
	Viton							

**Feature**

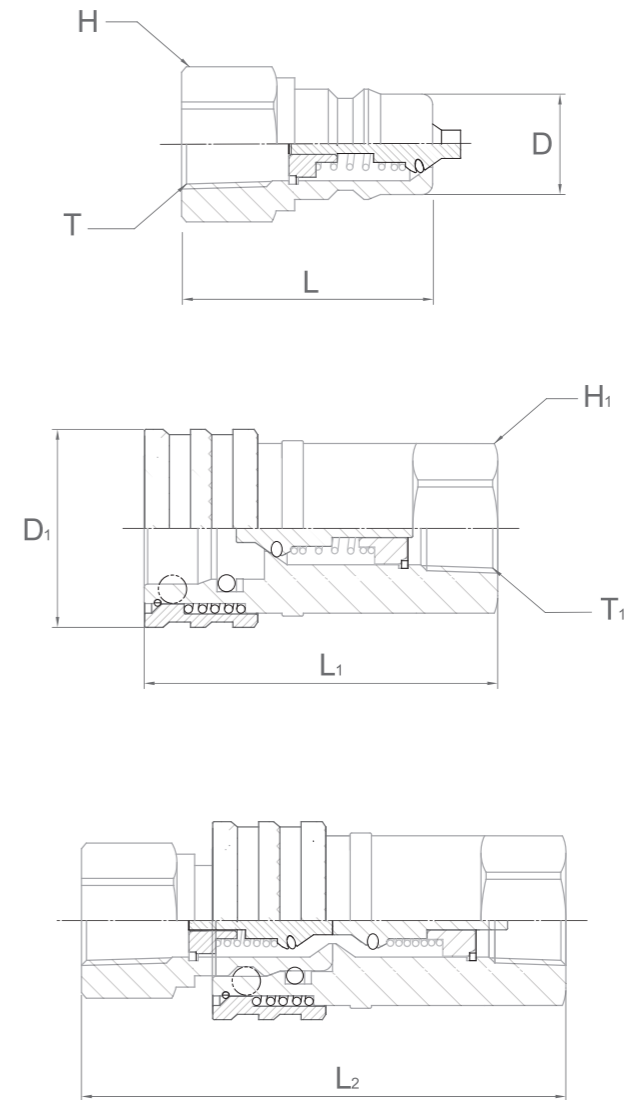
- Bearing ball latching system
- Shut-off system poppet valve
- Smooth connection and release of plug and socket allows convenient
- Automatically open when coupled, to keep the flow expedately

**Product specification**

- ISO 7241-A quick coupler
- Material high grade carbon steel surface treated Zinc-Nickel plate.
- Seals standard in oil proof NBR (Nitril Rubber) and Tetlon, Viton, Neoprene, EPDM or others on request.
- Working temperatures with standard seals -26°C[-15°F] ~ 100°C[212°F]

**Specifications**

Body Size (in)	1 / 4	3 / 8	1 / 2	3 / 4	1
Rated Pressure (PSI)	5000	4000	4000	3000	3000
Rated Flow (GPM)	3	6	12	28	50
Temperature Range(std seals)	-20°C to +100°C				
Standard seal material is Nitrile					



SIZE	NOMINAL BODY SIZE		L	L <sub>1</sub>	L <sub>2</sub>	H	H <sub>1</sub>	ØD	ØD <sub>1</sub>	T	T <sub>1</sub>
UNIT	mm	inch	mm	mm	mm	mm	mm	mm	mm	BSPT	BSPT
SPA 04R	6.3	1/4	36	49	68	19	19	11.8	27	1/4	1/4
SPA 06R	10	3/8	39	57	77	22	22	17.2	33	3/8	3/8
SPA 08R	12.5	1/2	44	66	89	27	27	20.5	40	1/2	1/2
SPA 12R	19	3/4	56	83	112	35	35	30	48	3/4	3/4
SPA 16R	25	1"	62	96	124	41	41	34.3	56	1"	1"

Dimensions for BESPT thread. Other threads available, see Order Codes opposite