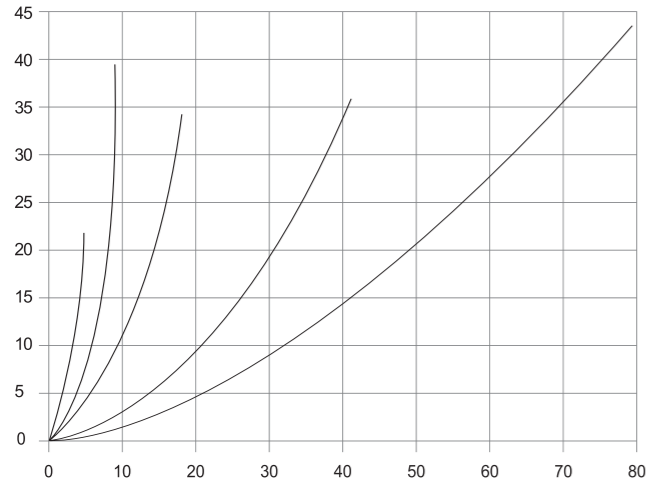


## QUICK RELEASE COUPLING (ISO - B) VALVE

**SPB**



Example	S	PB	4	0	PFF	4	ST	N
Sekwang								
<b>SERIES</b>	SPB (ISO 7241B)							
SP SERIES (POPPET)								
<b>Body size</b>								
04	1/4	6.3						
06	3/8	10						
08	1/2	12.5						
12	3/4	19						
16	1"	25						
<b>Part</b>								
0	Coupler male & Female set							
1	Female							
2	Male							
<b>Connecting screw</b>								
PFF	PFF							
PFM	PFM							
PTF	PTF							
PTM	PTM							
NPTF	NPTF							
NPTM	NPTM							
BSPTF	BSPTF							
BSPTM	BSPTM							
BSPFF	BSPFF							
BSPFM	BSPFM							
<b>Connecting screw size</b>								
04	1/4							
06	3/8							
08	1/2							
12	3/4							
16	1"							
<b>Material</b>								
ST	Steel							
SS	Stainless steel							
BR	Brass							
<b>Seal rubber</b>								
NBR	NBR							
HNBR	HNBR							
Viton	Viton							

**Feature**

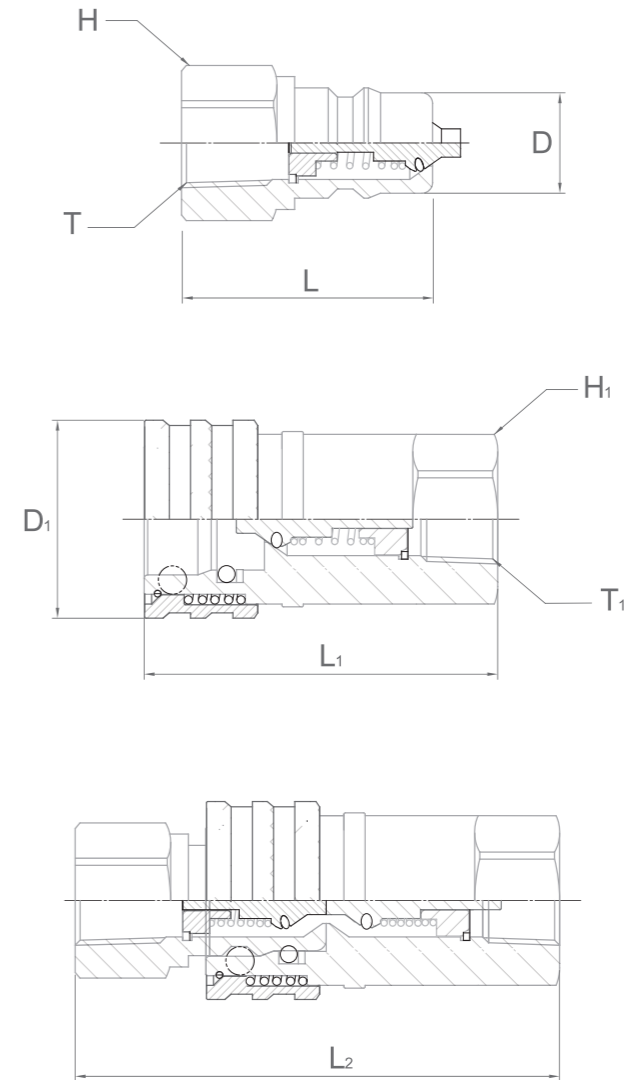
- Bearing ball latching system
- Shut-off system poppet valve
- Smooth connection and release of plug and socket allows convenient use
- Automatically open when coupled, to keep the flow expedately

**Product specification**

- ISO 7241-B quick coupler
- Material high grade carbon steel surface treated Zinc-Nickel plate
- Seals standard in oil proof NBR (Nitril Rubber) and Tetton, Viton, Neoprene, EPDM or others on request.
- Available to prevent uncoupled leakage
- Working temperatures with standard seals -26°C[-15°F] ~ 100°C[212°F]

**Specifications**

Body Size (in)	1 / 4	3 / 8	1 / 2	3 / 4	1
Rated Pressure (PSI)	5000	4000	4000	3000	3000
Rated Flow (GPM)	3	6	12	28	50
Temperature Range(std seals)	-20°C to +100°C				
Standard seal material is Nitrile					



SIZE	NOMINAL BODY SIZE		L	L <sub>1</sub>	L <sub>2</sub>	H	H <sub>1</sub>	ØD	ØD <sub>1</sub>	T	T <sub>1</sub>
UNIT	mm	inch	mm	mm	mm	mm	mm	mm	mm	BSPT	BSPT
SPB 04R	6.3	1/4	36	57	72	19	19	14.1	28	1/4	1/4
SPB 06R	10	3/8	39	63	78	22	22	19	35	3/8	3/8
SPB 08R	12.5	1/2	46	74	92	27	27	23.5	44	1/2	1/2
SPB 12R	19	3/4	56	91	112	35	35	31.4	53	3/4	3/4
SPB 16R	25	1"	66	106	132	41	41	37.8	62	1"	1"

Dimensions for BESPT thread. Other threads available, see Order Codes opposite